
ProLine med 2 ristdele - buet

GoGetNo : 6947

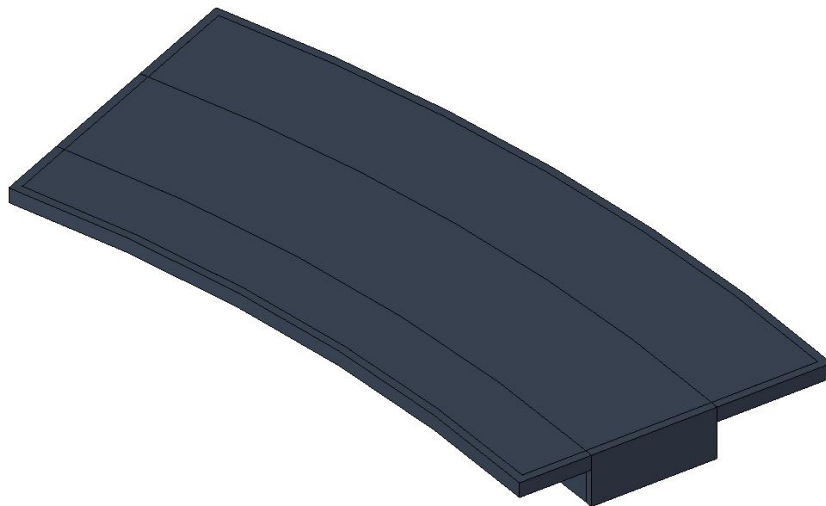
Drawing Specification of ProLine med 2 ristdele - buet

❖ Mechanical Equipment family categories

❖ 9 Family types :

1. PLSK 08 05/03
2. PLSK 09 05/04
3. PLSK 10 05/05
4. PLSK 11 06/05
5. PLSK 12 06/06
6. PLSK 13 07/06
7. PLSK 14 07/07

I. Family Variation



Main Type



Family Type
PLSK 08 05/03



Family Type
PLSK 09 05/04



Family Type
PLSK 10 05/05



Family Type
PLSK 11 06/05



Family Type
PLSK 12 06/06



Family Type
PLSK 13 07/06



Family Type
PLSK 14⁰7/07

Figure 01
Variation of the family elevation

II. Family Parameter and Code

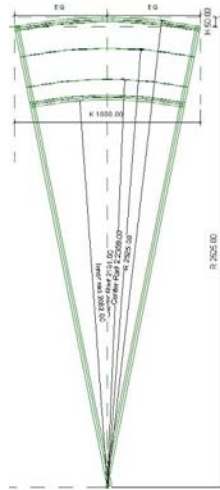


Figure 02
Family Plan Reference



Figure 03
Family Left Reference



Figure 04
Family Front Reference

Family Types

Name:

Parameter	Value	Formula
Graphics		
Flip Convector Side		
Materials and Finishes		
Grill	RAL 7024	
Frame	RAL 7024	
Dimensions		
Width	397.00	
R	2525.00	$((K \wedge 2) / (8 * H) + (H / 2))$
Width Outer Side	74.00	Width - Width Inner Side - Width Convector
Length	1006.14	$2 * 3.14 * R * Alpha / FC$
Width Inner Side	144.00	
K	1000.00	
H	50.00	
Depth	100.00	
Width Convector	179.00	
Alpha	22.842°	$2 * \text{acos}((R - H) / R)$
Identity Data		
URL	http://www.meinertz	
Model	PL07 08 5/3	
Manufacturer	Meinertz	"Meinertz"
Keynote	PL07 08 5/3	
Go/GetNo	6947	6947
Type Comments		
Description		
Assembly Code		
Cost		
Energy Analysis		
Thermal Performance	318.947350	Length * CTP / 1000 mm
Other		
TP	8	
RW3	133.00	$\text{if}(\text{Flip Convector Side}, \text{Count Grill Side } 2 * 24 \text{ mm} + 13 \text{ mm}, \text{Count Grill Side } 1 * 24 \text{ mm} + 13 \text{ mm})$
RW2	179.00	$(\text{Count Grill Main} - 1) * 24 \text{ mm} + 11 \text{ mm}$
RW1	85.00	$\text{if}(\text{Flip Convector Side}, \text{Count Grill Side } 1 * 24 \text{ mm} + 13 \text{ mm}, \text{Count Grill Side } 2 * 24 \text{ mm} + 13 \text{ mm})$
RW	397.00	$\text{RW1} + \text{RW2} + \text{RW3}$
FC	360.000°	360°
Count Grill Side 2	3	$\text{Count Grill Total} - \text{Count Grill Main} - \text{Count Grill Side } 1$
Center Rad 2	2392.00	$\text{Center Rad} + \text{RW2}$
Depth Outer	70.00	$\text{if}(\text{Flip Convector Side}, 20 \text{ mm}, 70 \text{ mm})$
Inner rad	2128.00	$R - \text{RW}$
Depth Inside	20.00	$\text{if}(\text{Flip Convector Side}, 70 \text{ mm}, 20 \text{ mm})$
Count Grill Total	16	$(\text{Width} - 13 \text{ mm}) / 24 \text{ mm}$
Count Grill Side 1	5	$(\text{Width Inner Side} - 13 \text{ mm}) / 24 \text{ mm}$
Count Grill Main	8	$(\text{Width Convector} - 11 \text{ mm}) / 24 \text{ mm} + 1$
Center Rad	2213.00	$\text{Inner rad} + \text{RW1}$
CTP	317	$\text{if}(\text{TP} = 3, 145, \text{if}(\text{TP} = 4, 191, \text{if}(\text{TP} = 5, 231, \text{if}(\text{TP} = 6, 262, \text{if}(\text{TP} = 7, 287, \text{if}(\text{TP} = 8, 317, \text{if}(\text{TP} = 9, 342, \text{if}(\text{TP} = 10, 367, \text{if}(\text{TP} = 11, 392, \text{if}(\text{TP} = 12, 417, \text{if}(\text{TP} = 13, 442, \text{if}(\text{TP} = 14, 467, \text{if}(\text{TP} = 15, 492, \text{if}(\text{TP} = 16, 517, \text{if}(\text{TP} = 17, 542, \text{if}(\text{TP} = 18, 567, \text{if}(\text{TP} = 19, 592, \text{if}(\text{TP} = 20, 617, \text{if}(\text{TP} = 21, 642, \text{if}(\text{TP} = 22, 667, \text{if}(\text{TP} = 23, 692, \text{if}(\text{TP} = 24, 717, \text{if}(\text{TP} = 25, 742, \text{if}(\text{TP} = 26, 767, \text{if}(\text{TP} = 27, 792, \text{if}(\text{TP} = 28, 817, \text{if}(\text{TP} = 29, 842, \text{if}(\text{TP} = 30, 867, \text{if}(\text{TP} = 31, 892, \text{if}(\text{TP} = 32, 917, \text{if}(\text{TP} = 33, 942, \text{if}(\text{TP} = 34, 967, \text{if}(\text{TP} = 35, 992, \text{if}(\text{TP} = 36, 1017, \text{if}(\text{TP} = 37, 1042, \text{if}(\text{TP} = 38, 1067, \text{if}(\text{TP} = 39, 1092, \text{if}(\text{TP} = 40, 1117, \text{if}(\text{TP} = 41, 1142, \text{if}(\text{TP} = 42, 1167, \text{if}(\text{TP} = 43, 1192, \text{if}(\text{TP} = 44, 1217, \text{if}(\text{TP} = 45, 1242, \text{if}(\text{TP} = 46, 1267, \text{if}(\text{TP} = 47, 1292, \text{if}(\text{TP} = 48, 1317, \text{if}(\text{TP} = 49, 1342, \text{if}(\text{TP} = 50, 1367, \text{if}(\text{TP} = 51, 1392, \text{if}(\text{TP} = 52, 1417, \text{if}(\text{TP} = 53, 1442, \text{if}(\text{TP} = 54, 1467, \text{if}(\text{TP} = 55, 1492, \text{if}(\text{TP} = 56, 1517, \text{if}(\text{TP} = 57, 1542, \text{if}(\text{TP} = 58, 1567, \text{if}(\text{TP} = 59, 1592, \text{if}(\text{TP} = 60, 1617, \text{if}(\text{TP} = 61, 1642, \text{if}(\text{TP} = 62, 1667, \text{if}(\text{TP} = 63, 1692, \text{if}(\text{TP} = 64, 1717, \text{if}(\text{TP} = 65, 1742, \text{if}(\text{TP} = 66, 1767, \text{if}(\text{TP} = 67, 1792, \text{if}(\text{TP} = 68, 1817, \text{if}(\text{TP} = 69, 1842, \text{if}(\text{TP} = 70, 1867, \text{if}(\text{TP} = 71, 1892, \text{if}(\text{TP} = 72, 1917, \text{if}(\text{TP} = 73, 1942, \text{if}(\text{TP} = 74, 1967, \text{if}(\text{TP} = 75, 1992, \text{if}(\text{TP} = 76, 2017, \text{if}(\text{TP} = 77, 2042, \text{if}(\text{TP} = 78, 2067, \text{if}(\text{TP} = 79, 2092, \text{if}(\text{TP} = 80, 2117, \text{if}(\text{TP} = 81, 2142, \text{if}(\text{TP} = 82, 2167, \text{if}(\text{TP} = 83, 2192, \text{if}(\text{TP} = 84, 2217, \text{if}(\text{TP} = 85, 2242, \text{if}(\text{TP} = 86, 2267, \text{if}(\text{TP} = 87, 2292, \text{if}(\text{TP} = 88, 2317, \text{if}(\text{TP} = 89, 2342, \text{if}(\text{TP} = 90, 2367, \text{if}(\text{TP} = 91, 2392, \text{if}(\text{TP} = 92, 2417, \text{if}(\text{TP} = 93, 2442, \text{if}(\text{TP} = 94, 2467, \text{if}(\text{TP} = 95, 2492, \text{if}(\text{TP} = 96, 2517, \text{if}(\text{TP} = 97, 2542, \text{if}(\text{TP} = 98, 2567, \text{if}(\text{TP} = 99, 2592, \text{if}(\text{TP} = 100, 2617, \text{if}(\text{TP} = 101, 2642, \text{if}(\text{TP} = 102, 2667, \text{if}(\text{TP} = 103, 2692, \text{if}(\text{TP} = 104, 2717, \text{if}(\text{TP} = 105, 2742, \text{if}(\text{TP} = 106, 2767, \text{if}(\text{TP} = 107, 2792, \text{if}(\text{TP} = 108, 2817, \text{if}(\text{TP} = 109, 2842, \text{if}(\text{TP} = 110, 2867, \text{if}(\text{TP} = 111, 2892, \text{if}(\text{TP} = 112, 2917, \text{if}(\text{TP} = 113, 2942, \text{if}(\text{TP} = 114, 2967, \text{if}(\text{TP} = 115, 2992, \text{if}(\text{TP} = 116, 3017, \text{if}(\text{TP} = 117, 3042, \text{if}(\text{TP} = 118, 3067, \text{if}(\text{TP} = 119, 3092, \text{if}(\text{TP} = 120, 3117, \text{if}(\text{TP} = 121, 3142, \text{if}(\text{TP} = 122, 3167, \text{if}(\text{TP} = 123, 3192, \text{if}(\text{TP} = 124, 3217, \text{if}(\text{TP} = 125, 3242, \text{if}(\text{TP} = 126, 3267, \text{if}(\text{TP} = 127, 3292, \text{if}(\text{TP} = 128, 3317, \text{if}(\text{TP} = 129, 3342, \text{if}(\text{TP} = 130, 3367, \text{if}(\text{TP} = 131, 3392, \text{if}(\text{TP} = 132, 3417, \text{if}(\text{TP} = 133, 3442, \text{if}(\text{TP} = 134, 3467, \text{if}(\text{TP} = 135, 3492, \text{if}(\text{TP} = 136, 3517, \text{if}(\text{TP} = 137, 3542, \text{if}(\text{TP} = 138, 3567, \text{if}(\text{TP} = 139, 3592, \text{if}(\text{TP} = 140, 3617, \text{if}(\text{TP} = 141, 3642, \text{if}(\text{TP} = 142, 3667, \text{if}(\text{TP} = 143, 3692, \text{if}(\text{TP} = 144, 3717, \text{if}(\text{TP} = 145, 3742, \text{if}(\text{TP} = 146, 3767, \text{if}(\text{TP} = 147, 3792, \text{if}(\text{TP} = 148, 3817, \text{if}(\text{TP} = 149, 3842, \text{if}(\text{TP} = 150, 3867, \text{if}(\text{TP} = 151, 3892, \text{if}(\text{TP} = 152, 3917, \text{if}(\text{TP} = 153, 3942, \text{if}(\text{TP} = 154, 3967, \text{if}(\text{TP} = 155, 3992, \text{if}(\text{TP} = 156, 4017, \text{if}(\text{TP} = 157, 4042, \text{if}(\text{TP} = 158, 4067, \text{if}(\text{TP} = 159, 4092, \text{if}(\text{TP} = 160, 4117, \text{if}(\text{TP} = 161, 4142, \text{if}(\text{TP} = 162, 4167, \text{if}(\text{TP} = 163, 4192, \text{if}(\text{TP} = 164, 4217, \text{if}(\text{TP} = 165, 4242, \text{if}(\text{TP} = 166, 4267, \text{if}(\text{TP} = 167, 4292, \text{if}(\text{TP} = 168, 4317, \text{if}(\text{TP} = 169, 4342, \text{if}(\text{TP} = 170, 4367, \text{if}(\text{TP} = 171, 4392, \text{if}(\text{TP} = 172, 4417, \text{if}(\text{TP} = 173, 4442, \text{if}(\text{TP} = 174, 4467, \text{if}(\text{TP} = 175, 4492, \text{if}(\text{TP} = 176, 4517, \text{if}(\text{TP} = 177, 4542, \text{if}(\text{TP} = 178, 4567, \text{if}(\text{TP} = 179, 4592, \text{if}(\text{TP} = 180, 4617, \text{if}(\text{TP} = 181, 4642, \text{if}(\text{TP} = 182, 4667, \text{if}(\text{TP} = 183, 4692, \text{if}(\text{TP} = 184, 4717, \text{if}(\text{TP} = 185, 4742, \text{if}(\text{TP} = 186, 4767, \text{if}(\text{TP} = 187, 4792, \text{if}(\text{TP} = 188, 4817, \text{if}(\text{TP} = 189, 4842, \text{if}(\text{TP} = 190, 4867, \text{if}(\text{TP} = 191, 4892, \text{if}(\text{TP} = 192, 4917, \text{if}(\text{TP} = 193, 4942, \text{if}(\text{TP} = 194, 4967, \text{if}(\text{TP} = 195, 4992, \text{if}(\text{TP} = 196, 5017, \text{if}(\text{TP} = 197, 5042, \text{if}(\text{TP} = 198, 5067, \text{if}(\text{TP} = 199, 5092, \text{if}(\text{TP} = 200, 5117, \text{if}(\text{TP} = 201, 5142, \text{if}(\text{TP} = 202, 5167, \text{if}(\text{TP} = 203, 5192, \text{if}(\text{TP} = 204, 5217, \text{if}(\text{TP} = 205, 5242, \text{if}(\text{TP} = 206, 5267, \text{if}(\text{TP} = 207, 5292, \text{if}(\text{TP} = 208, 5317, \text{if}(\text{TP} = 209, 5342, \text{if}(\text{TP} = 210, 5367, \text{if}(\text{TP} = 211, 5392, \text{if}(\text{TP} = 212, 5417, \text{if}(\text{TP} = 213, 5442, \text{if}(\text{TP} = 214, 5467, \text{if}(\text{TP} = 215, 5492, \text{if}(\text{TP} = 216, 5517, \text{if}(\text{TP} = 217, 5542, \text{if}(\text{TP} = 218, 5567, \text{if}(\text{TP} = 219, 5592, \text{if}(\text{TP} = 220, 5617, \text{if}(\text{TP} = 221, 5642, \text{if}(\text{TP} = 222, 5667, \text{if}(\text{TP} = 223, 5692, \text{if}(\text{TP} = 224, 5717, \text{if}(\text{TP} = 225, 5742, \text{if}(\text{TP} = 226, 5767, \text{if}(\text{TP} = 227, 5792, \text{if}(\text{TP} = 228, 5817, \text{if}(\text{TP} = 229, 5842, \text{if}(\text{TP} = 230, 5867, \text{if}(\text{TP} = 231, 5892, \text{if}(\text{TP} = 232, 5917, \text{if}(\text{TP} = 233, 5942, \text{if}(\text{TP} = 234, 5967, \text{if}(\text{TP} = 235, 5992, \text{if}(\text{TP} = 236, 6017, \text{if}(\text{TP} = 237, 6042, \text{if}(\text{TP} = 238, 6067, \text{if}(\text{TP} = 239, 6092, \text{if}(\text{TP} = 240, 6117, \text{if}(\text{TP} = 241, 6142, \text{if}(\text{TP} = 242, 6167, \text{if}(\text{TP} = 243, 6192, \text{if}(\text{TP} = 244, 6217, \text{if}(\text{TP} = 245, 6242, \text{if}(\text{TP} = 246, 6267, \text{if}(\text{TP} = 247, 6292, \text{if}(\text{TP} = 248, 6317, \text{if}(\text{TP} = 249, 6342, \text{if}(\text{TP} = 250, 6367, \text{if}(\text{TP} = 251, 6392, \text{if}(\text{TP} = 252, 6417, \text{if}(\text{TP} = 253, 6442, \text{if}(\text{TP} = 254, 6467, \text{if}(\text{TP} = 255, 6492, \text{if}(\text{TP} = 256, 6517, \text{if}(\text{TP} = 257, 6542, \text{if}(\text{TP} = 258, 6567, \text{if}(\text{TP} = 259, 6592, \text{if}(\text{TP} = 260, 6617, \text{if}(\text{TP} = 261, 6642, \text{if}(\text{TP} = 262, 6667, \text{if}(\text{TP} = 263, 6692, \text{if}(\text{TP} = 264, 6717, \text{if}(\text{TP} = 265, 6742, \text{if}(\text{TP} = 266, 6767, \text{if}(\text{TP} = 267, 6792, \text{if}(\text{TP} = 268, 6817, \text{if}(\text{TP} = 269, 6842, \text{if}(\text{TP} = 270, 6867, \text{if}(\text{TP} = 271, 6892, \text{if}(\text{TP} = 272, 6917, \text{if}(\text{TP} = 273, 6942, \text{if}(\text{TP} = 274, 6967, \text{if}(\text{TP} = 275, 6992, \text{if}(\text{TP} = 276, 7017, \text{if}(\text{TP} = 277, 7042, \text{if}(\text{TP} = 278, 7067, \text{if}(\text{TP} = 279, 7092, \text{if}(\text{TP} = 280, 7117, \text{if}(\text{TP} = 281, 7142, \text{if}(\text{TP} = 282, 7167, \text{if}(\text{TP} = 283, 7192, \text{if}(\text{TP} = 284, 7217, \text{if}(\text{TP} = 285, 7242, \text{if}(\text{TP} = 286, 7267, \text{if}(\text{TP} = 287, 7292, \text{if}(\text{TP} = 288, 7317, \text{if}(\text{TP} = 289, 7342, \text{if}(\text{TP} = 290, 7367, \text{if}(\text{TP} = 291, 7392, \text{if}(\text{TP} = 292, 7417, \text{if}(\text{TP} = 293, 7442, \text{if}(\text{TP} = 294, 7467, \text{if}(\text{TP} = 295, 7492, \text{if}(\text{TP} = 296, 7517, \text{if}(\text{TP} = 297, 7542, \text{if}(\text{TP} = 298, 7567, \text{if}(\text{TP} = 299, 7592, \text{if}(\text{TP} = 300, 7617, \text{if}(\text{TP} = 301, 7642, \text{if}(\text{TP} = 302, 7667, \text{if}(\text{TP} = 303, 7692, \text{if}(\text{TP} = 304, 7717, \text{if}(\text{TP} = 305, 7742, \text{if}(\text{TP} = 306, 7767, \text{if}(\text{TP} = 307, 7792, \text{if}(\text{TP} = 308, 7817, \text{if}(\text{TP} = 309, 7842, \text{if}(\text{TP} = 310, 7867, \text{if}(\text{TP} = 311, 7892, \text{if}(\text{TP} = 312, 7917, \text{if}(\text{TP} = 313, 7942, \text{if}(\text{TP} = 314, 7967, \text{if}(\text{TP} = 315, 7992, \text{if}(\text{TP} = 316, 8017, \text{if}(\text{TP} = 317, 8042, \text{if}(\text{TP} = 318, 8067, \text{if}(\text{TP} = 319, 8092, \text{if}(\text{TP} = 320, 8117, \text{if}(\text{TP} = 321, 8142, \text{if}(\text{TP} = 322, 8167, \text{if}(\text{TP} = 323, 8192, \text{if}(\text{TP} = 324, 8217, \text{if}(\text{TP} = 325, 8242, \text{if}(\text{TP} = 326, 8267, \text{if}(\text{TP} = 327, 8292, \text{if}(\text{TP} = 328, 8317, \text{if}(\text{TP} = 329, 8342, \text{if}(\text{TP} = 330, 8367, \text{if}(\text{TP} = 331, 8392, \text{if}(\text{TP} = 332, 8417, \text{if}(\text{TP} = 333, 8442, \text{if}(\text{TP} = 334, 8467, \text{if}(\text{TP} = 335, 8492, \text{if}(\text{TP} = 336, 8517, \text{if}(\text{TP} = 337, 8542, \text{if}(\text{TP} = 338, 8567, \text{if}(\text{TP} = 339, 8592, \text{if}(\text{TP} = 340, 8617, \text{if}(\text{TP} = 341, 8642, \text{if}(\text{TP} = 342, 8667, \text{if}(\text{TP} = 343, 8692, \text{if}(\text{TP} = 344, 8717, \text{if}(\text{TP} = 345, 8742, \text{if}(\text{TP} = 346, 8767, \text{if}(\text{TP} = 347, 8792, \text{if}(\text{TP} = 348, 8817, \text{if}(\text{TP} = 349, 8842, \text{if}(\text{TP} = 350, 8867, \text{if}(\text{TP} = 351, 8892, \text{if}(\text{TP} = 352, 8917, \text{if}(\text{TP} = 353, 8942, \text{if}(\text{TP} = 354, 8967, \text{if}(\text{TP} = 355, 8992, \text{if}(\text{TP} = 356, 9017, \text{if}(\text{TP} = 357, 9042, \text{if}(\text{TP} = 358, 9067, \text{if}(\text{TP} = 359, 9092, \text{if}(\text{TP} = 360, 9117, \text{if}(\text{TP} = 361, 9142, \text{if}(\text{TP} = 362, 9167, \text{if}(\text{TP} = 363, 9192, \text{if}(\text{TP} = 364, 9217, \text{if}(\text{TP} = 365, 9242, \text{if}(\text{TP} = 366, 9267, \text{if}(\text{TP} = 367, 9292, \text{if}(\text{TP} = 368, 9317, \text{if}(\text{TP} = 369, 9342, \text{if}(\text{TP} = 370, 9367, \text{if}(\text{TP} = 371, 9392, \text{if}(\text{TP} = 372, 9417, \text{if}(\text{TP} = 373, 9442, \text{if}(\text{TP} = 374, 9467, \text{if}(\text{TP} = 375, 9492, \text{if}(\text{TP} = 376, 9517, \text{if}(\text{TP} = 377, 9542, \text{if}(\text{TP} = 378, 9567, \text{if}(\text{TP} = 379, 9592, \text{if}(\text{TP} = 380, 9617, \text{if}(\text{TP} = 381, 9642, \text{if}(\text{TP} = 382, 9667, \text{if}(\text{TP} = 383, 9692, \text{if}(\text{TP} = 384, 9717, \text{if}(\text{TP} = 385, 9742, \text{if}(\text{TP} = 386, 9767, \text{if}(\text{TP} = 387, 9792, \text{if}(\text{TP} = 388, 9817, \text{if}(\text{TP} = 389, 9842, \text{if}(\text{TP} = 390, 9867, \text{if}(\text{TP} = 391, 9892, \text{if}(\text{TP} = 392, 9917, \text{if}(\text{TP} = 393, 9942, \text{if}(\text{TP} = 394, 9967, \text{if}(\text{TP} = 395, 9992, \text{if}(\text{TP} = 396, 10017, \text{if}(\text{TP} = 397, 10042, \text{if}(\text{TP} = 398, 10067, \text{if}(\text{TP} = 399, 10092, \text{if}(\text{TP} = 400, 10117, \text{if}(\text{TP} = 401, 10142, \text{if}(\text{TP} = 402, 10167, \text{if}(\text{TP} = 403, 10192, \text{if}(\text{TP} = 404, 10217, \text{if}(\text{TP} = 405, 10242, \text{if}(\text{TP} = 406, 10267, \text{if}(\text{TP} = 407, 10292, \text{if}(\text{TP} = 408, 10317, \text{if}(\text{TP} = 409, 10342, \text{if}(\text{TP} = 410, 10367, \text{if}(\text{TP} = 411, 10392, \text{if}(\text{TP} = 412, 10417, \text{if}(\text{TP} = 413, 10442, \text{if}(\text{TP} = 414, 10467, \text{if}(\text{TP} = 415, 10492, \text{if}(\text{TP} = 416, 10517, \text{if}(\text{TP} = 417, 10542, \text{if}(\text{TP} = 418, 10567, \text{if}(\text{TP} = 419, 10592, \text{if}(\text{TP} = 420, 10617, \text{if}(\text{TP} = 421, 10642, \text{if}(\text{TP} = 422, 10667, \text{if}(\text{TP} = 423, 10692, \text{if}(\text{TP} = 424, 10717, \text{if}(\text{TP} = 425, 10742, \text{if}(\text{TP} = 426, 10767, \text{if}(\text{TP} = 427, 10792, \text{if}(\text{TP} = 428, 10817, \text{if}(\text{TP} = 429, 10842, \text{if}(\text{TP} = 430, 10867, \text{if}(\text{TP} = 431, 10892, \text{if}(\text{TP} = 432, 10917, \text{if}(\text{TP} = 433, 10942, \text{if}(\text{TP} = 434, 10967, \text{if}(\text{TP} = 435, 10992, \text{if}(\text{TP} = 436, 11017, \text{if}(\text{TP} = 437, 11042, \text{if}(\text{TP} = 438, 11067, \text{if}(\text{TP} = 439, 11092, \text{if}(\text{TP} = 440, 11117, \text{if}(\text{TP} = 441, 11142, \text{if}(\text{TP} = 442, 11167, \text{if}(\text{TP} = 443, 11192, \text{if}(\text{TP} = 444, 11217, \text{if}(\text{TP} = 445, 11242, \text{if}(\text{TP} = 446, 11267, \text{if}(\text{TP} = 447, 11292, \text{if}(\text{TP} = 448, 11317, \text{if}(\text{TP} = 449, 11342, \text{if}(\text{TP} = 450, 11367, \text{if}(\text{TP} = 451, 11392, \text{if}(\text{TP} = 452, 11417, \text{if}(\text{TP} = 453, 11442, \text{if}(\text{TP} = 454, 11467, \text{if}(\text{TP} = 455, 11492, \text{if}(\text{TP} = 456, 11517, \text{if}(\text{TP} = 457, 11542, \text{if}(\text{TP} = 458, 11567, \text{if}(\text{TP} = 459, 11592, \text{if}(\text{TP} = 460, 11617, \text{if}(\text{TP} = 461, 11642, \text{if}(\text{TP} = 462, 11667, \text{if}(\text{TP} = 463, 11692, \text{if}(\text{TP} = 464, 11717, \text{if}(\text{TP} = 465, 11742, \text{if}(\text{TP} = 466, 11767, \text{if}(\text{TP} = 467, 11792, \text{if}(\text{TP} = 468, 11817, \text{if}(\text{TP} = 469, 11842, \text{if}(\text{TP} = 470, 11867, \text{if}(\text{TP} = 471, 11892, \text{if}(\text{TP} = 472, 11917, \text{if}(\text{TP} = 473, 11942, \text{if}(\text{TP} = 474, 11967, \text{if}(\text{TP} = 475, 11992, \text{if}(\text{TP} = 476, 12017, \text{if}(\text{TP} = 477, 12042, \text{if}(\text{TP} = 478, 12067, \text{if}(\text{TP} =$