

Ribberør LKK

GoGetNo : 6960

Family Types Preset

1. Type - K101-164-12

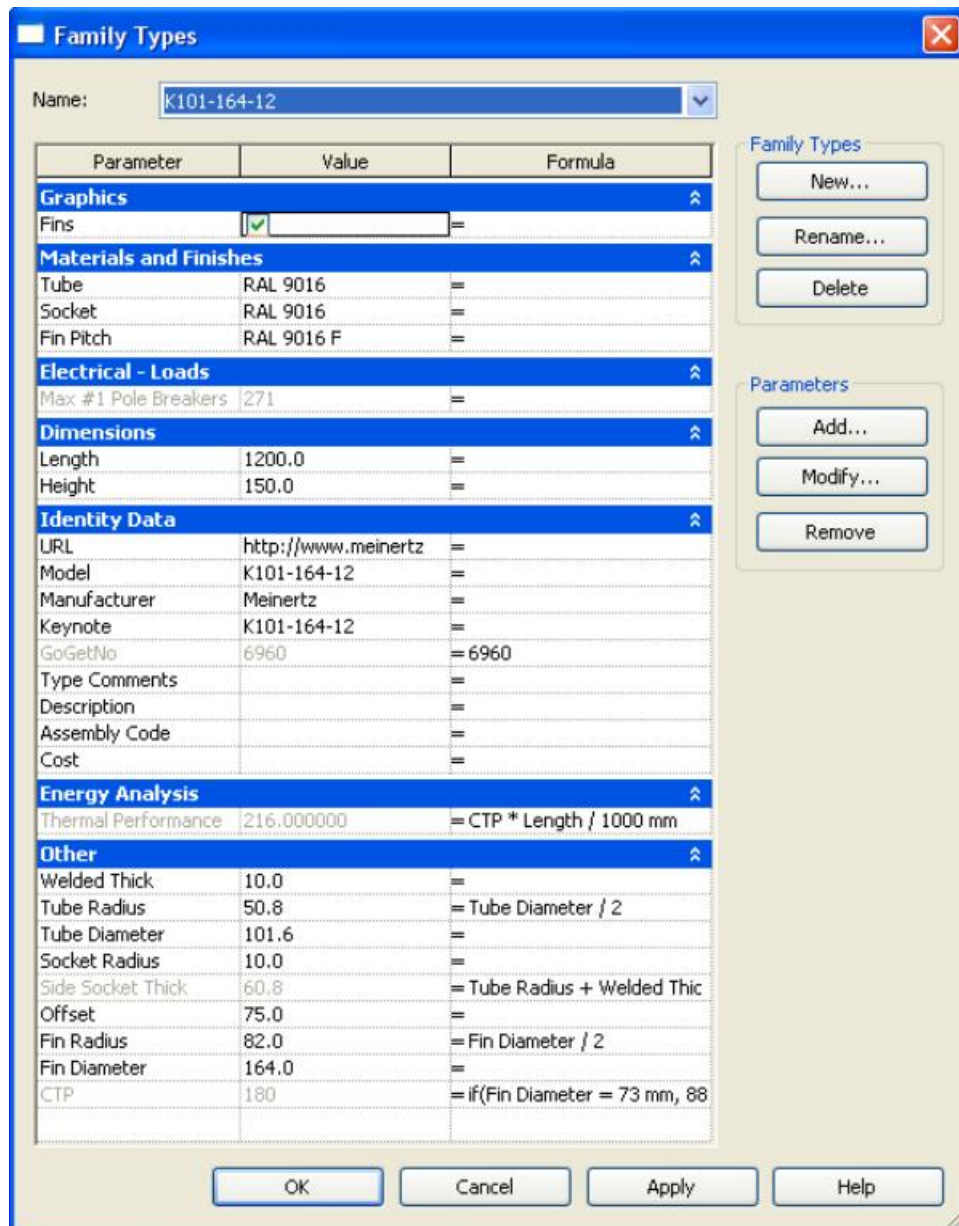


Figure A.01

Type - K101-164-12
Family Parameter Reference

2. Type - K33-73-08

Family Types ✖

Name:

Parameter	Value	Formula
Graphics >>		
Fins	<input checked="" type="checkbox"/>	=
Materials and Finishes >>		
Tube	RAL 9016	=
Socket	RAL 9016	=
Fin Pitch	RAL 9016 F	=
Electrical - Loads >>		
Max #1 Pole Breakers	271	=
Dimensions >>		
Length	1200.0	=
Height	125.0	=
Identity Data >>		
URL	http://www.meinertz	=
Model	K33-73-08	=
Manufacturer	Meinertz	=
Keynote	K33-73-08	=
GoGetNo	6960	= 6960
Type Comments		=
Description		=
Assembly Code		=
Cost		=
Energy Analysis >>		
Thermal Performance	105.600000	= CTP * Length / 1000 mm
Other >>		
Welded Thick	10.0	=
Tube Radius	16.9	= Tube Diameter / 2
Tube Diameter	33.7	=
Socket Radius	10.0	=
Side Socket Thick	26.9	= Tube Radius + Welded Thick
Offset	75.0	=
Fin Radius	36.5	= Fin Diameter / 2
Fin Diameter	73.0	=
CTP	88	= If(Fin Diameter = 73 mm, 88

Family Types

New...

Rename...

Delete

Parameters

Add...

Modify...

Remove

OK Cancel Apply Help

Figure A.02
Type - K33-73-08
Family Parameter Reference

3. Type - K33-83-10

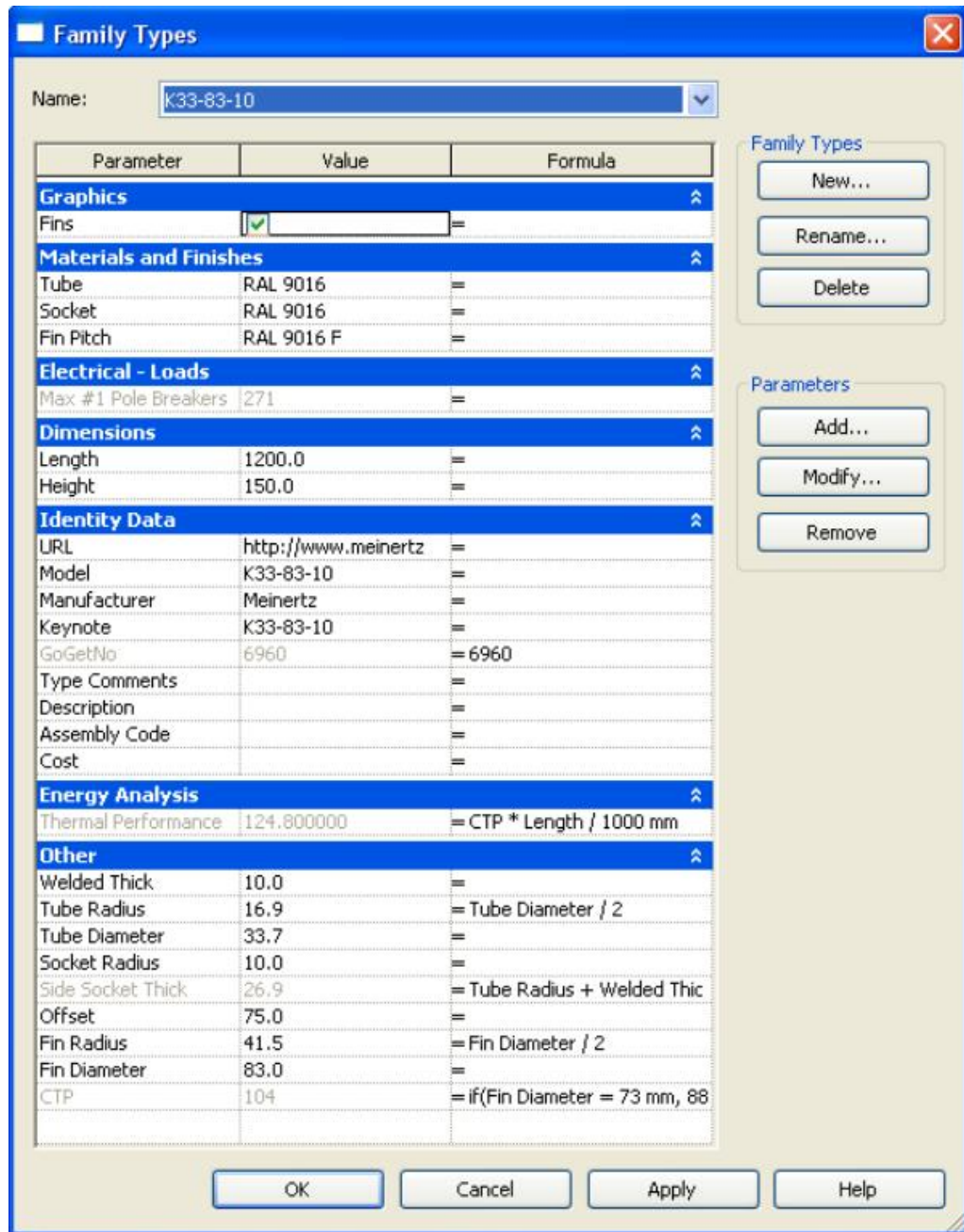


Figure A.03
Type - K33-83-10
Family Parameter Reference

4. Type - K42-92-10

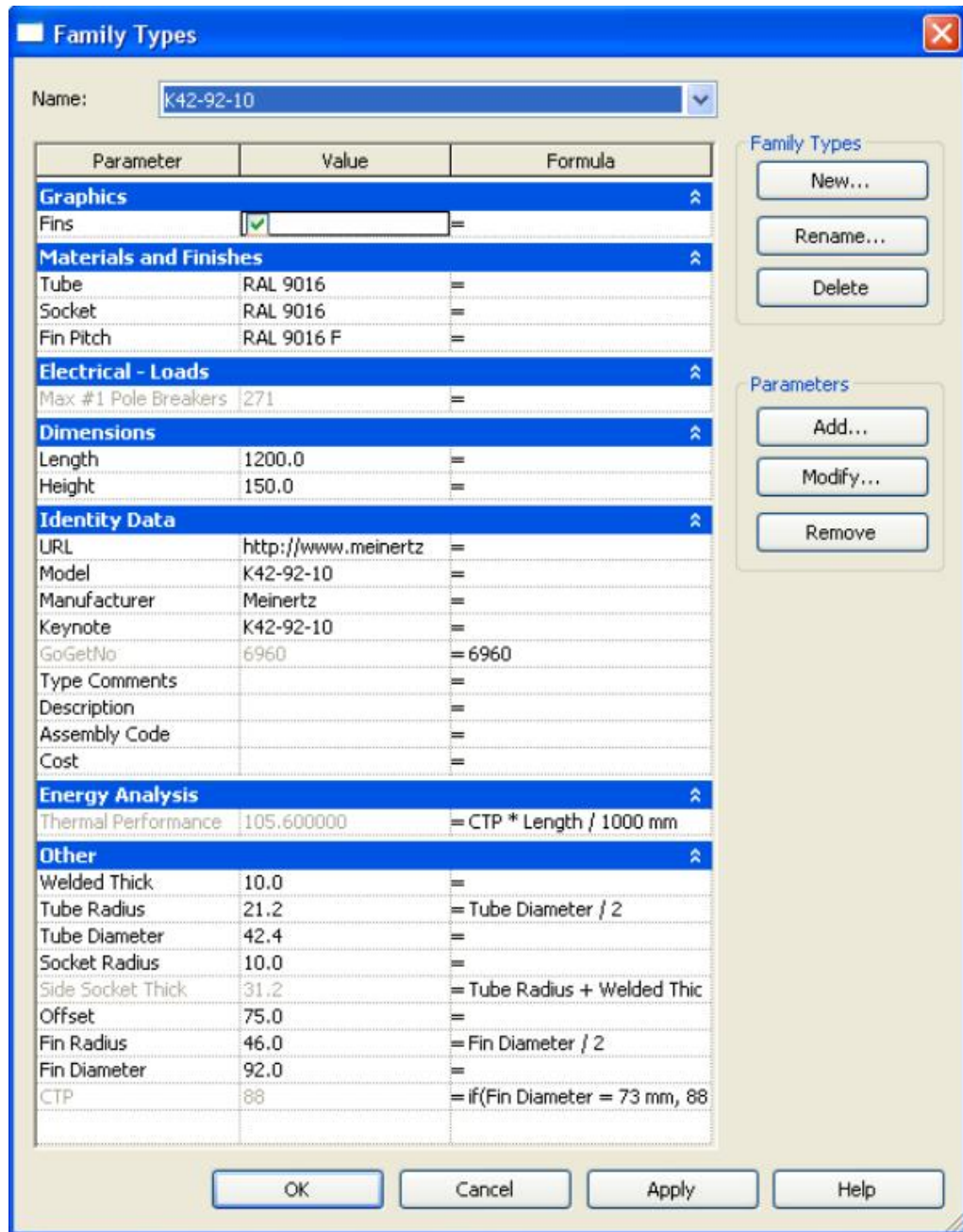


Figure A.04
Type - K42-92-10
Family Parameter Reference

5. Type - K48-98-10

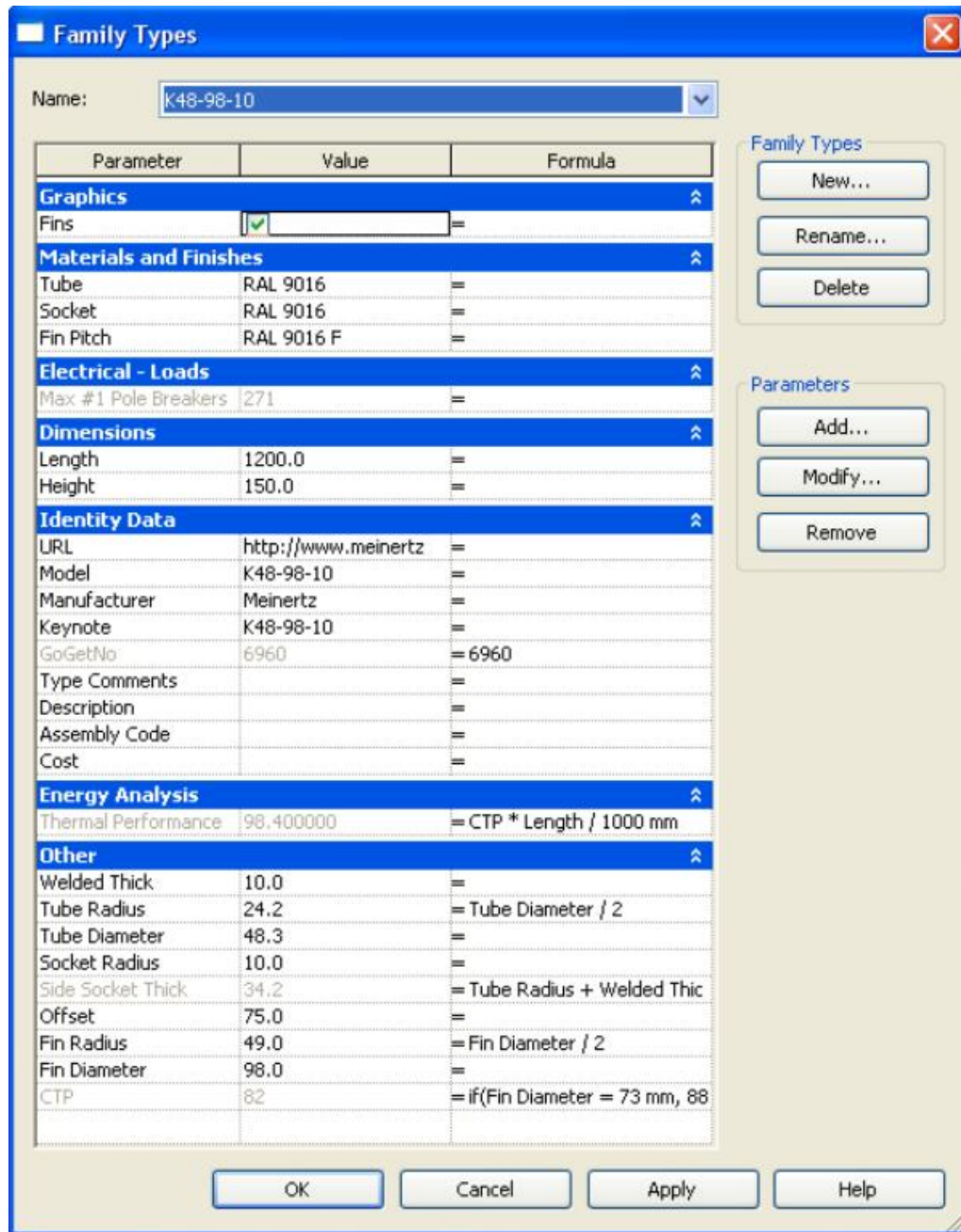


Figure A.05
 Type - K48-98-10
 Family Parameter Reference

6. Type - K60-110-10

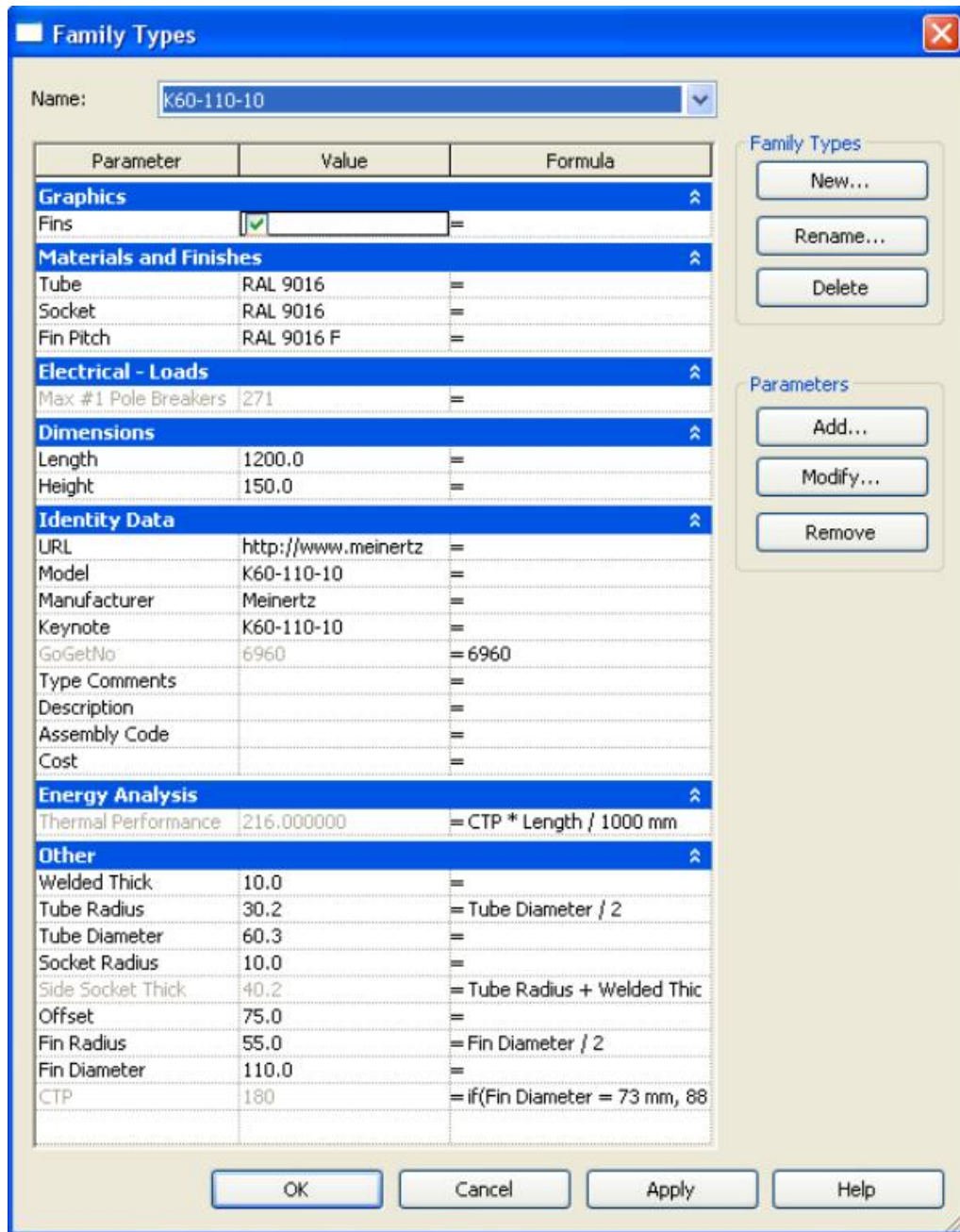


Figure A.06
 Type - K60-110-10
 Family Parameter Reference

7. Type - K60-123-12

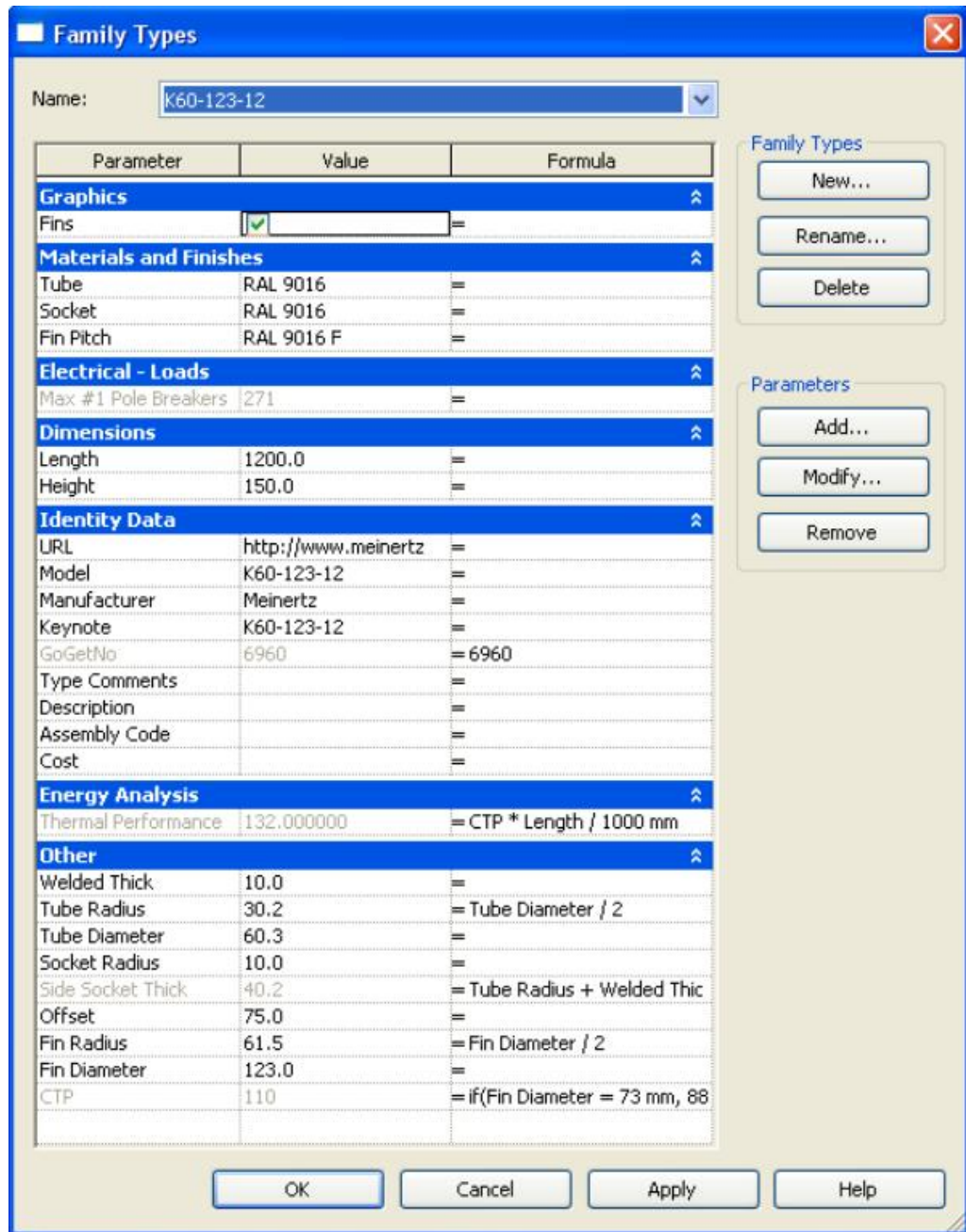


Figure A.07
Type - K60-123-12
Family Parameter Reference

8. Type - K76-139-12

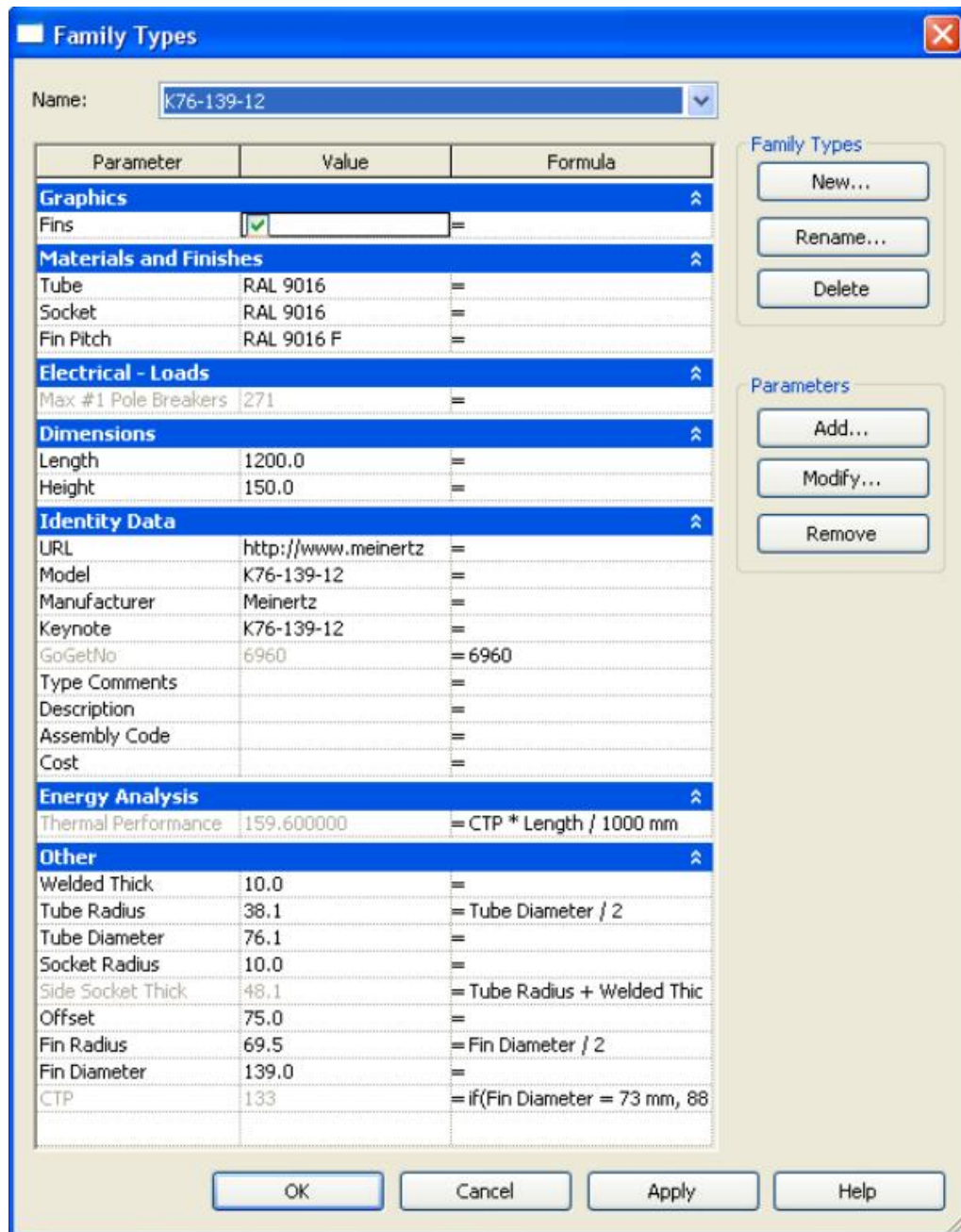


Figure A.08
Type - K76-139-12
Family Parameter Reference