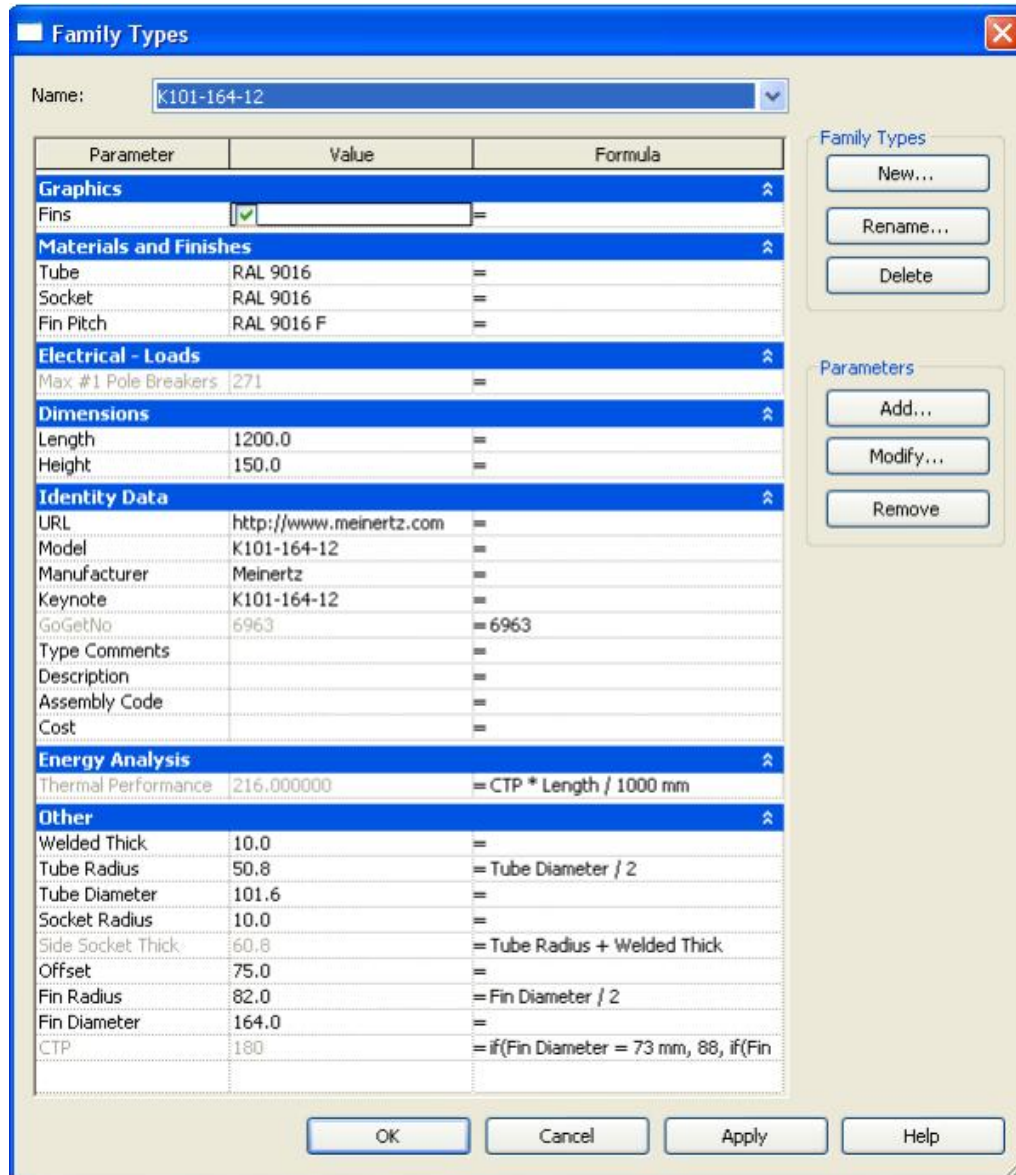


# Ribberør LIF

## GoGetNo : 6963

### Family Types Preset

#### 1. Type - K101-164-12



**Figure A.01**

Type - K101-164-12  
Family Parameter Reference

## 2. Type - K33-73-08

**Family Types**

Name:

Parameter	Value	Formula
<b>Graphics</b>		
Fins	<input checked="" type="checkbox"/>	=
<b>Materials and Finishes</b>		
Tube	RAL 9016	=
Socket	RAL 9016	=
Fin Pitch	RAL 9016 F	=
<b>Electrical - Loads</b>		
Max #1 Pole Breakers	271	=
<b>Dimensions</b>		
Length	1200.0	=
Height	150.0	=
<b>Identity Data</b>		
URL	http://www.meinertz.com	=
Model	K33-73-08	=
Manufacturer	Meinertz	=
Keynote	K33-73-08	=
GoGetNo	6963	= 6963
Type Comments		=
Description		=
Assembly Code		=
Cost		=
<b>Energy Analysis</b>		
Thermal Performance	105.600000	= CTP * Length / 1000 mm
<b>Other</b>		
Welded Thick	10.0	=
Tube Radius	16.9	= Tube Diameter / 2
Tube Diameter	33.7	=
Socket Radius	10.0	=
Side Socket Thick	26.9	= Tube Radius + Welded Thick
Offset	75.0	=
Fin Radius	36.5	= Fin Diameter / 2
Fin Diameter	73.0	=
CTP	88	= if(Fin Diameter = 73 mm, 88, if(Fin

**Family Types**

New...  
Rename...  
Delete

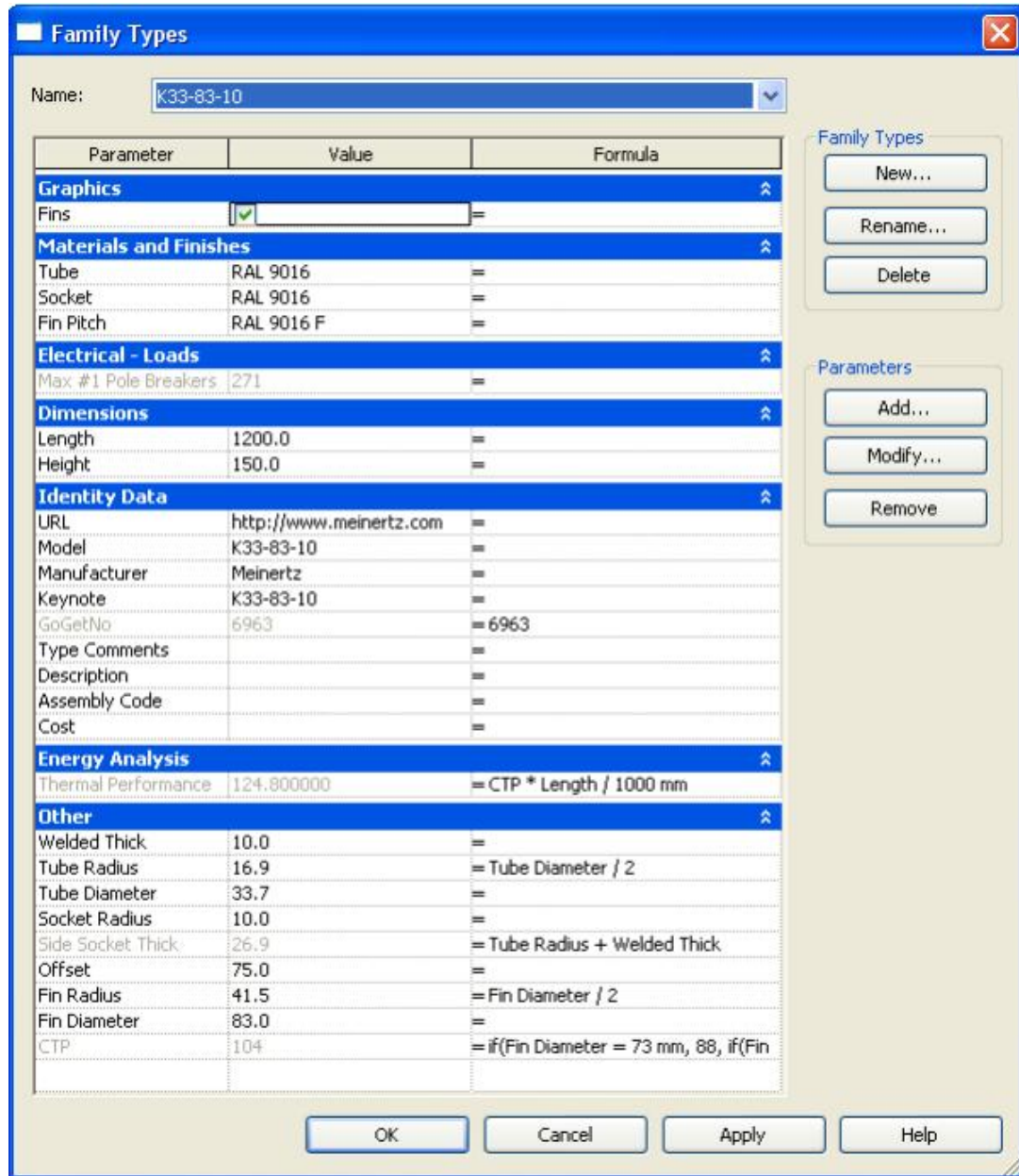
**Parameters**

Add...  
Modify...  
Remove

OK Cancel Apply Help

**Figure A.02**  
Type - K33-73-08  
Family Parameter Reference

### 3. Type - K33-83-10



**Figure A.03**

Type - K33-83-10  
Family Parameter Reference

#### 4. Type - K42-92-10



**Figure A.04**

Type - K42-92-10  
Family Parameter Reference

## 5. Type - K48-98-10

**Family Types**

Name:

Parameter	Value	Formula
<b>Graphics</b>		
Fins	<input checked="" type="checkbox"/>	=
<b>Materials and Finishes</b>		
Tube	RAL 9016	=
Socket	RAL 9016	=
Fin Pitch	RAL 9016 F	=
<b>Electrical - Loads</b>		
Max #1 Pole Breakers	271	=
<b>Dimensions</b>		
Length	1200.0	=
Height	150.0	=
<b>Identity Data</b>		
URL	http://www.meinertz.com	=
Model	K48-98-10	=
Manufacturer	Meinertz	=
Keynote	K48-98-10	=
GoGetNo	6963	= 6963
Type Comments		=
Description		=
Assembly Code		=
Cost		=
<b>Energy Analysis</b>		
Thermal Performance	98.400000	= CTP * Length / 1000 mm
<b>Other</b>		
Welded Thick	10.0	=
Tube Radius	24.2	= Tube Diameter / 2
Tube Diameter	48.3	=
Socket Radius	10.0	=
Side Socket Thick	34.2	= Tube Radius + Welded Thick
Offset	75.0	=
Fin Radius	49.0	= Fin Diameter / 2
Fin Diameter	98.0	=
CTP	82	= if(Fin Diameter = 73 mm, 88, if(Fin

**Family Types**

New...  
Rename...  
Delete

**Parameters**

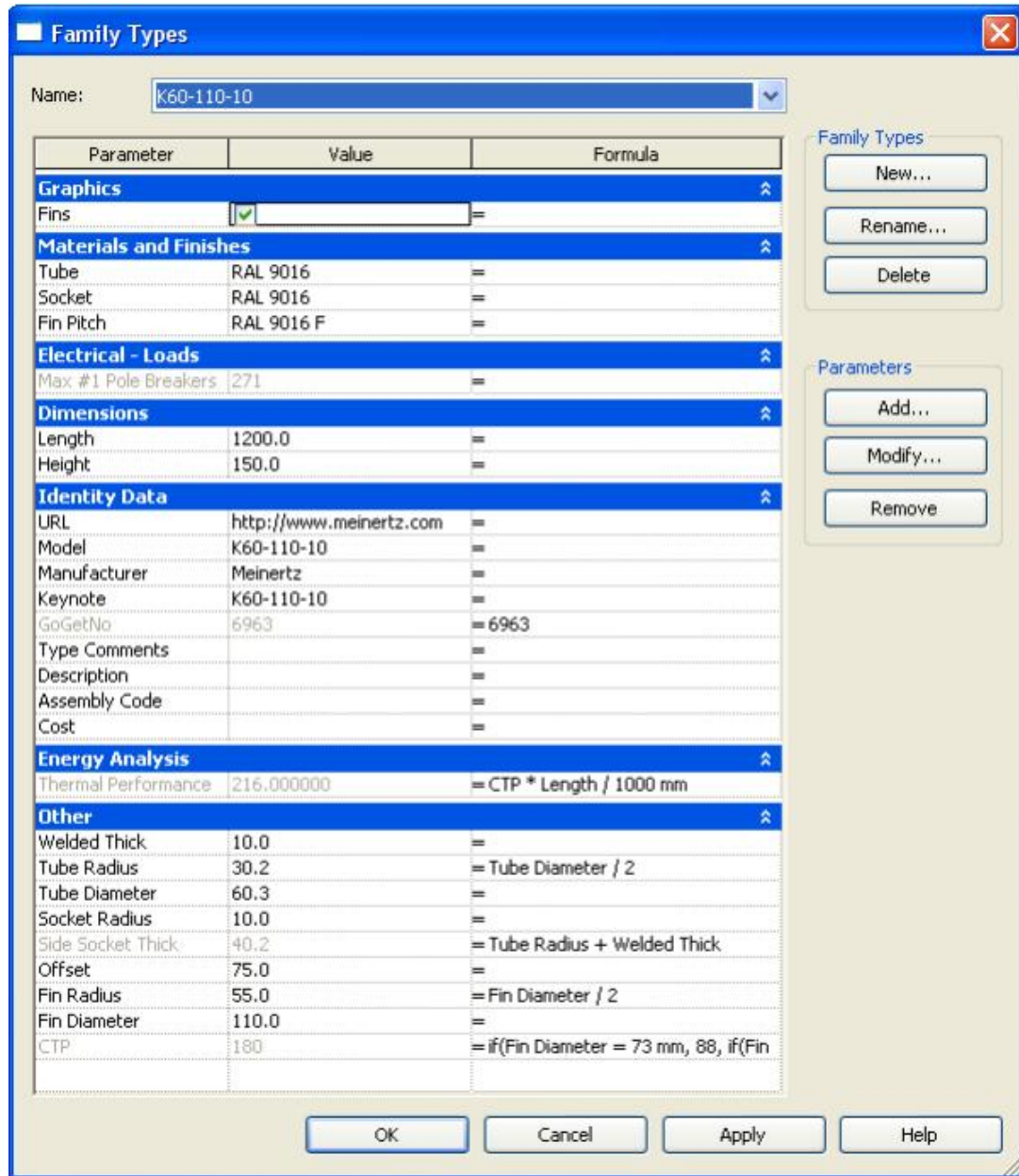
Add...  
Modify...  
Remove

OK Cancel Apply Help

**Figure A.05**  
Type - K48-98-10  
Family Parameter Reference



6. Type - K60-110-10



**Figure A.06**  
 Type - K60-110-10  
 Family Parameter Reference

## 7. Type - K60-123-12

**Family Types**

Name:

Parameter	Value	Formula
<b>Graphics</b>		
Fins	<input checked="" type="checkbox"/>	=
<b>Materials and Finishes</b>		
Tube	RAL 9016	=
Socket	RAL 9016	=
Fin Pitch	RAL 9016 F	=
<b>Electrical - Loads</b>		
Max #1 Pole Breakers	271	=
<b>Dimensions</b>		
Length	1200.0	=
Height	150.0	=
<b>Identity Data</b>		
URL	http://www.meinertz.com	=
Model	K60-123-12	=
Manufacturer	Meinertz	=
Keynote	K60-123-12	=
GoGetNo	6963	= 6963
Type Comments		=
Description		=
Assembly Code		=
Cost		=
<b>Energy Analysis</b>		
Thermal Performance	132.000000	= CTP * Length / 1000 mm
<b>Other</b>		
Welded Thick	10.0	=
Tube Radius	30.2	= Tube Diameter / 2
Tube Diameter	60.3	=
Socket Radius	10.0	=
Side Socket Thick	40.2	= Tube Radius + Welded Thick
Offset	75.0	=
Fin Radius	61.5	= Fin Diameter / 2
Fin Diameter	123.0	=
CTP	110	= if(Fin Diameter = 73 mm, 88, if(Fin

**Family Types**

New...  
Rename...  
Delete

**Parameters**

Add...  
Modify...  
Remove

OK Cancel Apply Help

**Figure A.07**

Type - K60-123-12  
Family Parameter Reference

## 8. Type - K76-139-12

**Family Types**

Name:

Parameter	Value	Formula
<b>Graphics</b>		
Fins	<input checked="" type="checkbox"/>	=
<b>Materials and Finishes</b>		
Tube	RAL 9016	=
Socket	RAL 9016	=
Fin Pitch	RAL 9016 F	=
<b>Electrical - Loads</b>		
Max #1 Pole Breakers	271	=
<b>Dimensions</b>		
Length	1200.0	=
Height	150.0	=
<b>Identity Data</b>		
URL	http://www.meinertz.com	=
Model	K76-139-12	=
Manufacturer	Meinertz	=
Keynote	K76-139-12	=
GoGetNo	6963	= 6963
Type Comments		=
Description		=
Assembly Code		=
Cost		=
<b>Energy Analysis</b>		
Thermal Performance	159.600000	= CTP * Length / 1000 mm
<b>Other</b>		
Welded Thick	10.0	=
Tube Radius	38.1	= Tube Diameter / 2
Tube Diameter	76.1	=
Socket Radius	10.0	=
Side Socket Thick	48.1	= Tube Radius + Welded Thick
Offset	75.0	=
Fin Radius	69.5	= Fin Diameter / 2
Fin Diameter	139.0	=
CTP	133	= if(Fin Diameter = 73 mm, 88, if(Fin

**Family Types**

New...  
Rename...  
Delete

**Parameters**

Add...  
Modify...  
Remove

OK Cancel Apply Help

**Figure A.08**

Type - K76-139-12  
Family Parameter Reference