

---

# Ribberør BBF

## GoGetNo : 6980

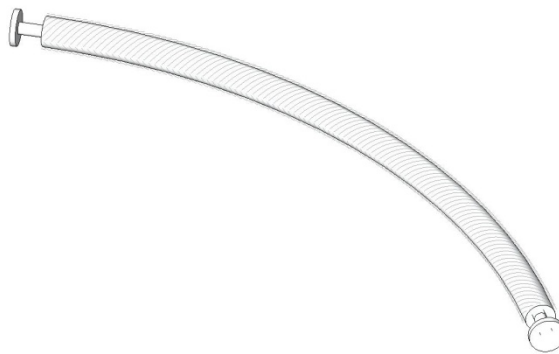
---

Drawing Specification of Ribberør BBF

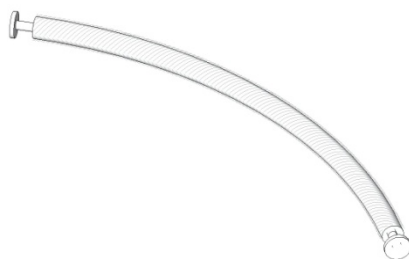
- ❖ Family with single view of 3d with Variation Detail
- ❖ Mechanical Equipment family
- ❖ 2 Family types :
  1. B32-83-10
  2. B42-92-10

---

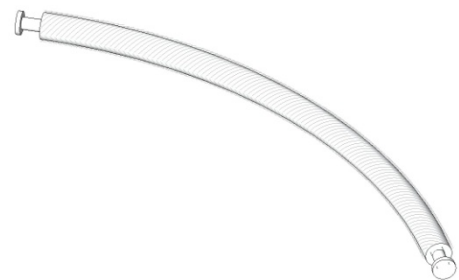
### I. Family Variation



**Figure 01**  
Family Perspectives



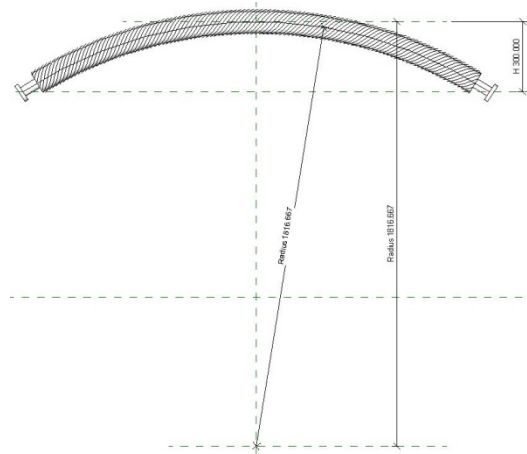
Ribberør BBF B32-83-10



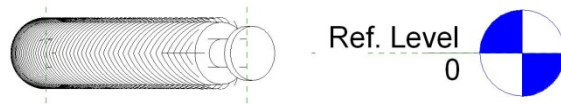
Ribberør BBF B42-92-10

**Figure 02**  
Variation of the family front elevation

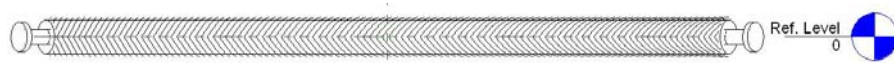
## II. Family Parameter and Code



**Figure 03**  
Family Plan Reference



**Figure 04**  
Family Left Reference



**Figure 05**  
Family Front Reference

**Family Types**

Name: B42-92-10

Parameter	Value	Formula
<b>Graphics</b>		
1501 Fins	<input checked="" type="checkbox"/>	=
<b>Materials and Finishes</b>		
2003 Tube	RAL 9016	=
2002 Socket	RAL 9016	=
2001 Fin	RAL 9016 F	=
<b>Dimensions</b>		
1403 Length	2116.8	= 2 * 3.14 * R * Alpha / FC
1401 K	2000.0	=
1402 H	300.0	=
1404 Alpha	66.797°	= 2 * acos((R - H) / R)
<b>Identity Data</b>		
1705 URL	http://www.meinertz.co	=
1702 Model	B42-92-10	=
1704 Manufacturer	Meinertz	= "Meinertz"
1701 Keynote	B42-92-10	=
1706 GoGetNo	6980	= 6980
Type Comments		=
Description		=
Assembly Code		=
Cost		=
<b>Energy Analysis</b>		
1201 Thermal Performance	186.282420	= CTP * Length / 1000 mm
<b>Other</b>		
9804 Tube Radius	21.0	=
9803 Socket Radius	40.0	=
9802 Socket Length	0.500°	=
9806 R	1816.7	= ((K ^ 2) / (8 * H) + (H / 2))
9801 Fin Radius	46.0	=
9805 Fin Diameter	92.0	= Fin Radius * 2
9807 FC	360.000°	= 360°
9808 CTP	88	= if(Fin Diameter = 73 mm, 88, if(Fin Dia

Buttons: New..., Rename..., Delete, Add..., Modify..., Remove, OK, Cancel, Apply, Help

**Figure 06**  
Parameter Reference