

Ribberør 2PE

GoGetNo : 6970

Family Types Preset

1. Type - K33-73-08

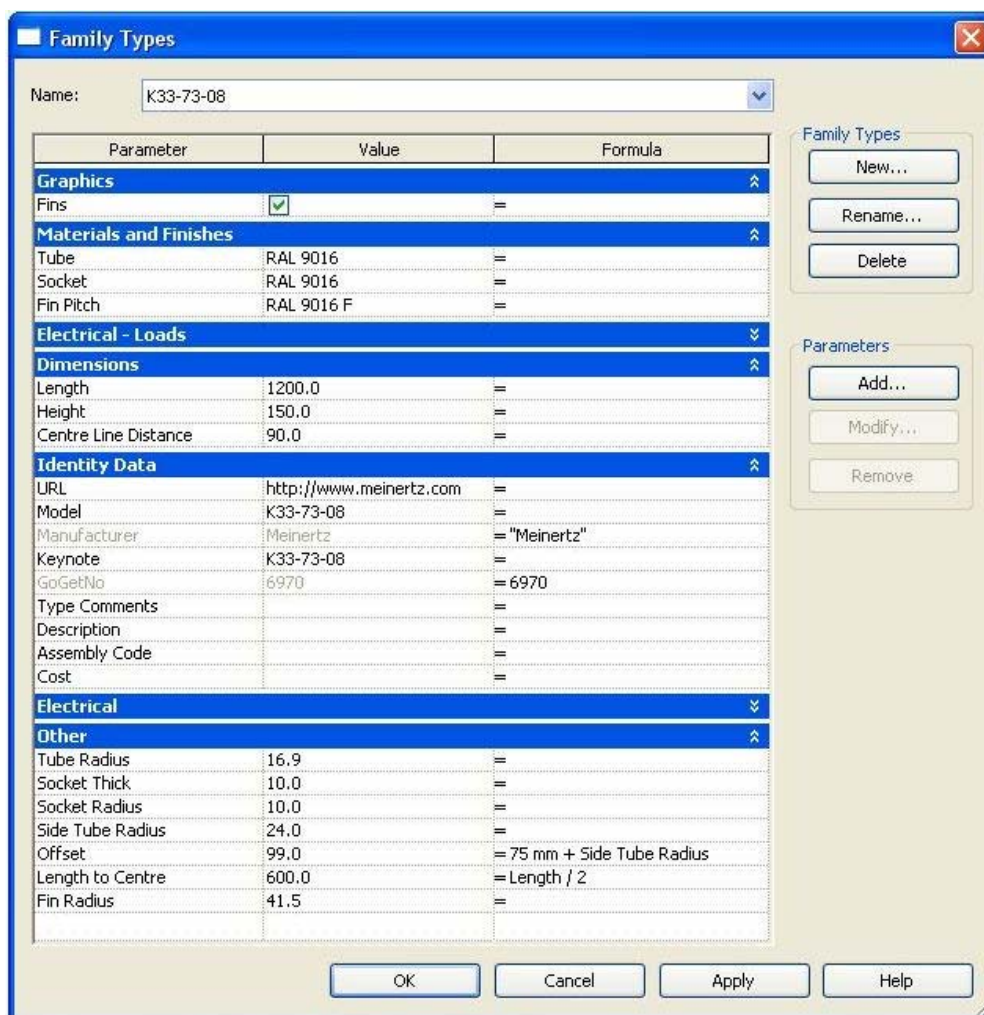


Figure A.01
Type - K33-73-08
Family Parameter Reference

2. Type - K33-83-10

Family Types

Name:

Parameter	Value	Formula
Graphics		
Fins	<input checked="" type="checkbox"/>	=
Materials and Finishes		
Tube	RAL 9016	=
Socket	RAL 9016	=
Fin Pitch	RAL 9016 F	=
Electrical - Loads		
Dimensions		
Length	1200.0	=
Height	150.0	=
Centre Line Distance	100.0	=
Identity Data		
URL	http://www.meinertz.com	=
Model	K33-83-10	=
Manufacturer	Meinertz	= "Meinertz"
Keynote	K33-83-10	=
GoGetNo	6970	= 6970
Type Comments		=
Description		=
Assembly Code		=
Cost		=
Electrical		
Other		
Tube Radius	16.9	=
Socket Thick	10.0	=
Socket Radius	10.0	=
Side Tube Radius	24.0	=
Offset	99.0	= 75 mm + Side Tube Radius
Length to Centre	600.0	= Length / 2
Fin Radius	41.5	=

Family Types

New...
Rename...
Delete

Parameters

Add...
Modify...
Remove

OK Cancel Apply Help

Figure A.02
Type - K33-83-08
Family Parameter Reference

3. Type - K42-92-10

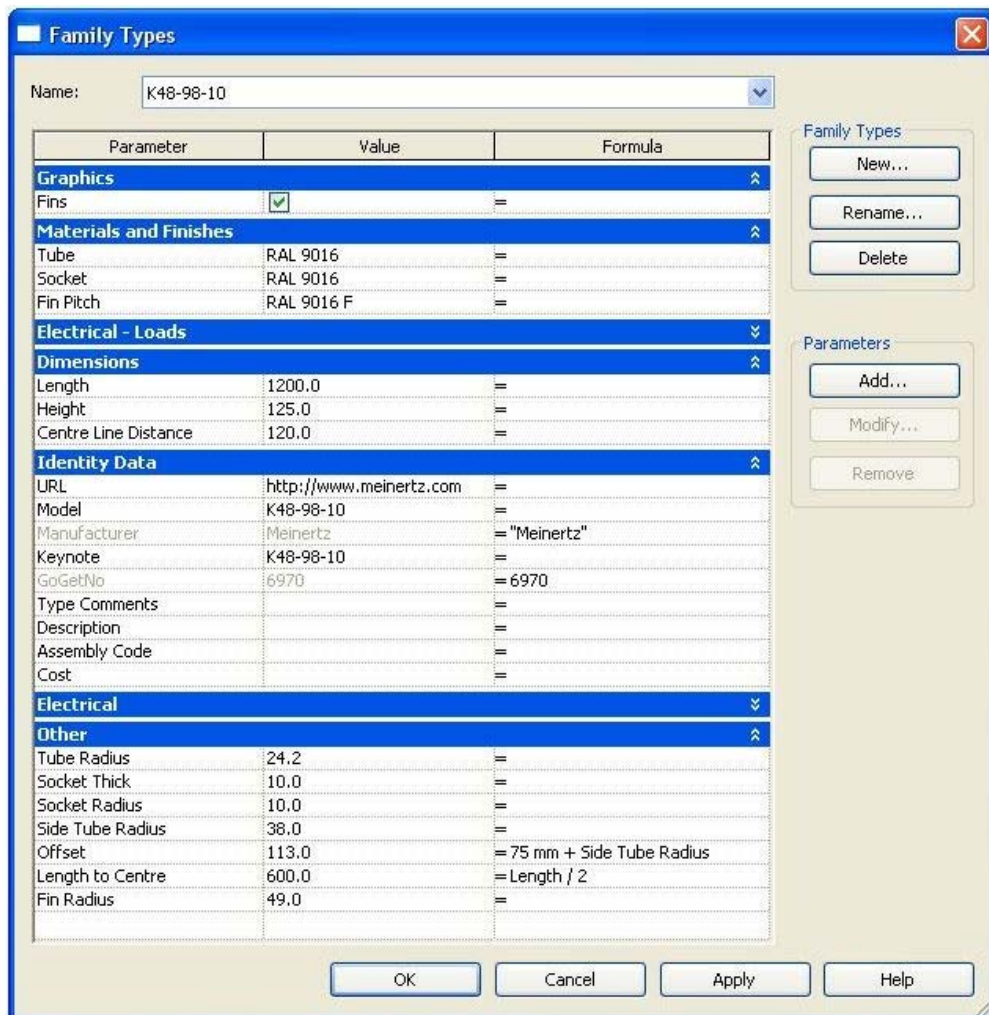


Figure A.03
Type – K42-92-10
Family Parameter Reference

4. Type - K48-98-10

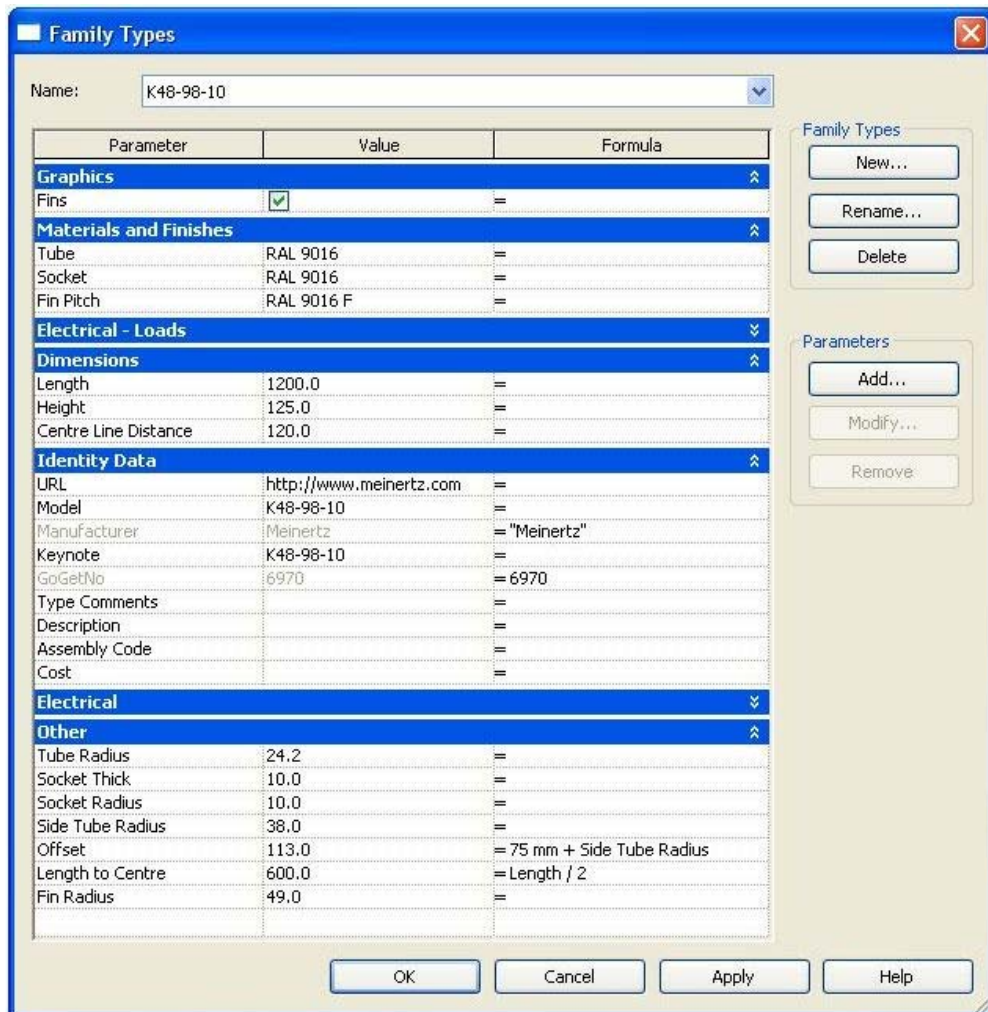


Figure A.04
Type - K48-98-10
Family Parameter Reference

5. Type - K60-110-10

Family Types

Name:

Parameter	Value	Formula
Graphics		
Fins	<input checked="" type="checkbox"/>	=
Materials and Finishes		
Tube	RAL 9016	=
Socket	RAL 9016	=
Fin Pitch	RAL 9016 F	=
Electrical - Loads		
Dimensions		
Length	1200.0	=
Height	150.0	=
Centre Line Distance	150.0	=
Identity Data		
URL	http://www.meinertz.com	=
Model	K60-110-10	=
Manufacturer	Meinertz	= "Meinertz"
Keynote	K60-110-10	=
GoGetNo	6970	= 6970
Type Comments		=
Description		=
Assembly Code		=
Cost		=
Electrical		
Other		
Tube Radius	30.2	=
Socket Thick	10.0	=
Socket Radius	10.0	=
Side Tube Radius	54.0	=
Offset	129.0	= 75 mm + Side Tube Radius
Length to Centre	600.0	= Length / 2
Fin Radius	55.0	=

Family Types: New... Rename... Delete

Parameters: Add... Modify... Remove

OK Cancel Apply Help

Figure A.05
 Type – K60-101-10
 Family Parameter Reference

6. Type - K60-123-12

Family Types

Name:

Parameter	Value	Formula
Graphics		
Fins	<input checked="" type="checkbox"/>	=
Materials and Finishes		
Tube	RAL 9016	=
Socket	RAL 9016	=
Fin Pitch	RAL 9016 F	=
Electrical - Loads		
Dimensions		
Length	1200.0	=
Height	100.0	=
Centre Line Distance	150.0	=
Identity Data		
URL	http://www.meinertz.com	=
Model	K60-123-12	=
Manufacturer	Meinertz	= "Meinertz"
Keynote	K60-123-12	=
GoGetNo	6970	= 6970
Type Comments		=
Description		=
Assembly Code		=
Cost		=
Electrical		
Other		
Tube Radius	30.2	=
Socket Thick	10.0	=
Socket Radius	10.0	=
Side Tube Radius	54.0	=
Offset	129.0	= 75 mm + Side Tube Radius
Length to Centre	600.0	= Length / 2
Fin Radius	61.5	=

Family Types

New...
Rename...
Delete

Parameters

Add...
Modify...
Remove

OK Cancel Apply Help

Figure A.06
Type - K60-123-10
Family Parameter Reference

7. Type - K76-139-12

Family Types

Name: K76-139-12

Parameter	Value	Formula
Graphics		
Fins	<input checked="" type="checkbox"/>	=
Materials and Finishes		
Tube	RAL 9016	=
Socket	RAL 9016	=
Fin Pitch	RAL 9016 F	=
Electrical - Loads		
Dimensions		
Length	1200.0	=
Height	150.0	=
Centre Line Distance	190.0	=
Identity Data		
URL	http://www.meinertz.com	=
Model	K76-139-12	=
Manufacturer	Meinertz	= "Meinertz"
Keynote	K76-139-12	=
GoGetNo	6970	= 6970
Type Comments		=
Description		=
Assembly Code		=
Cost		=
Electrical		
Other		
Tube Radius	38.5	=
Socket Thick	10.0	=
Socket Radius	10.0	=
Side Tube Radius	57.0	=
Offset	132.0	= 75 mm + Side Tube Radius
Length to Centre	600.0	= Length / 2
Fin Radius	69.5	=

Family Types

New...
Rename...
Delete

Parameters

Add...
Modify...
Remove

OK Cancel Apply Help

Figure A.07
Type – K76-139-12
Family Parameter Reference

8. Type – K101-164-12

Family Types

Name:

Parameter	Value	Formula
Graphics		
Fins	<input checked="" type="checkbox"/>	=
Materials and Finishes		
Tube	RAL 9016	=
Socket	RAL 9016	=
Fin Pitch	RAL 9016 F	=
Electrical - Loads		
Dimensions		
Length	1200.0	=
Height	150.0	=
Centre Line Distance	270.0	=
Identity Data		
URL	http://www.meinertz.com	=
Model	K101-164-12	=
Manufacturer	Meinertz	= "Meinertz"
Keynote	K101-164-12	=
GoGetNo	6970	= 6970
Type Comments		=
Description		=
Assembly Code		=
Cost		=
Electrical		
Other		
Tube Radius	50.8	=
Socket Thick	10.0	=
Socket Radius	10.0	=
Side Tube Radius	69.5	=
Offset	144.5	= 75 mm + Side Tube Radius
Length to Centre	600.0	= Length / 2
Fin Radius	82.0	=

Family Types:

Parameters:

Figure A.08
 Type – K101-164-12
 Family Parameter Reference

Sub Family Types Preset

1. Type - K33-73-08

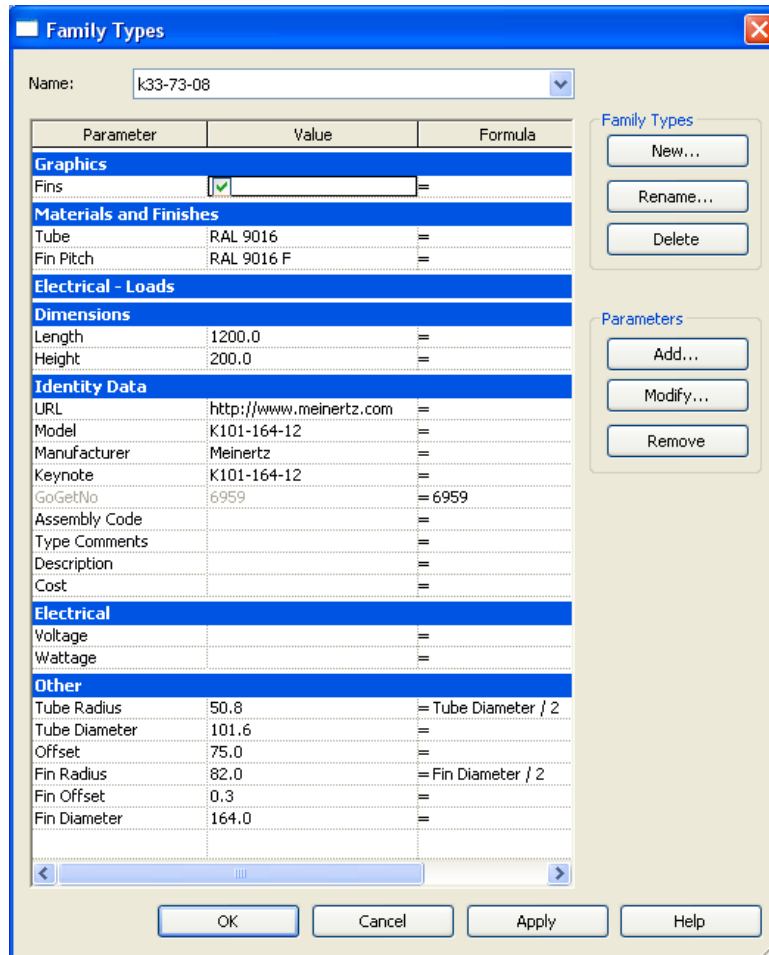


Figure A.09

Type - K33-73-08

Sub Family Parameter Reference

2. Type - K33-83-10

Name: K33-83-10

Parameter	Value	Formula
Graphics		
Fins	<input checked="" type="checkbox"/>	=
Materials and Finishes		
Tube	RAL 9016	=
Fin Pitch	RAL 9016 F	=
Electrical - Loads		
Dimensions		
Length	1200.0	=
Height	150.0	=
Identity Data		
URL	http://www.meinertz.com	=
Model	K33-83-10	=
Manufacturer	Meinertz	=
Keynote	K33-83-10	=
GoGetNo	6959	= 6959
Assembly Code		=
Type Comments		=
Description		=
Cost		=
Electrical		
Voltage		=
Wattage		=
Other		
Tube Radius	16.9	= Tube Diameter / 2
Tube Diameter	33.7	=
Offset	75.0	=
Fin Radius	41.5	= Fin Diameter / 2
Fin Offset	0.3	=
Fin Diameter	83.0	=

Family Types

New...
Rename...
Delete

Parameters

Add...
Modify...
Remove

OK Cancel Apply Help

Figure A.10
Type - K33-83-08
Sub Family Parameter Reference

3. Type - K42-92-10

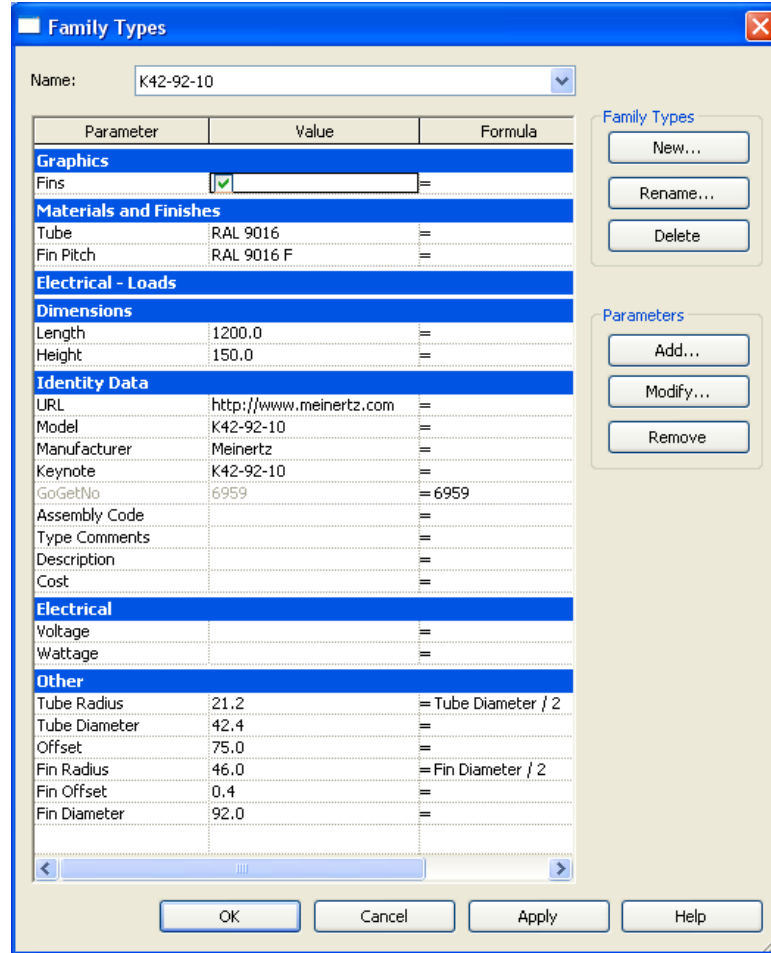


Figure A.11
Type – K42-92-10
Sub Family Parameter Reference

4. Type - K48-98-10

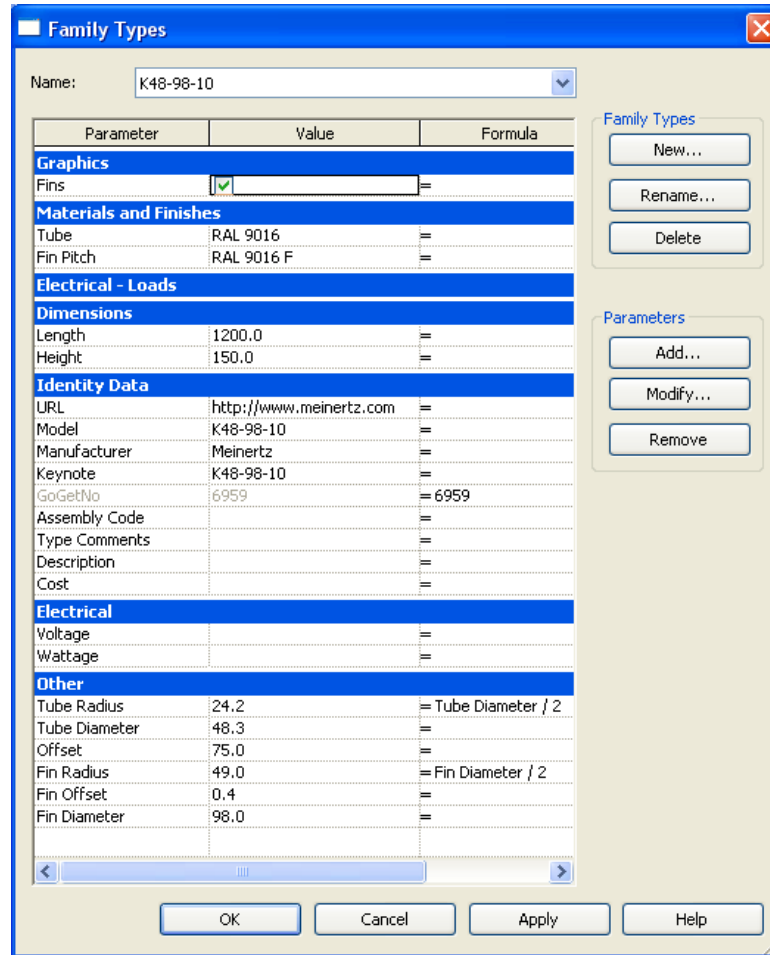


Figure A.12
 Type - K48-98-10
 Sub Family Parameter Reference

5. Type - K60-110-10

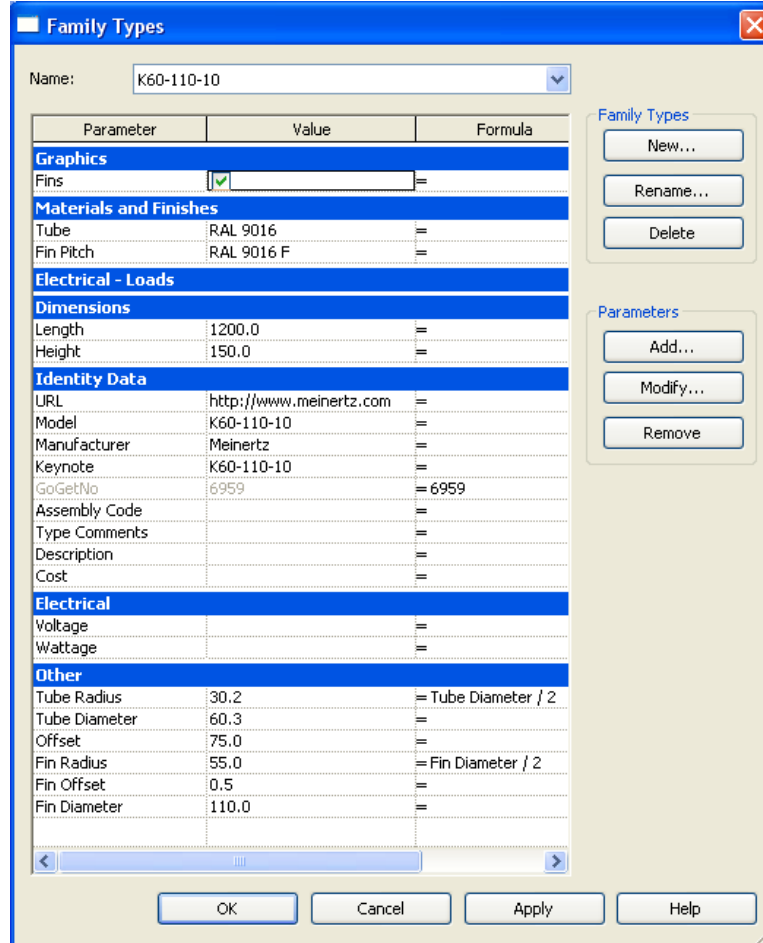


Figure A.13
Type – K60-101-10
Sub Family Parameter Reference

6. Type - K60-123-12

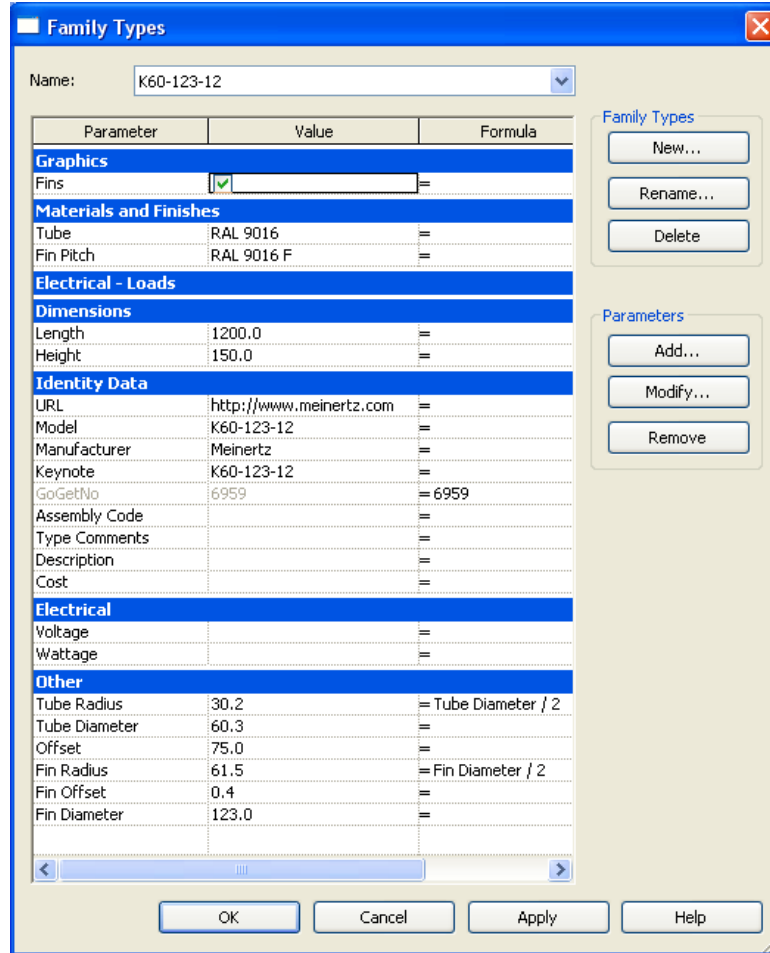


Figure A.14
Type - K60-123-10
Sub Family Parameter Reference

7. Type - K76-139-12

Name: K76-139-12

Parameter	Value	Formula
Graphics		
Fins	<input checked="" type="checkbox"/>	=
Materials and Finishes		
Tube	RAL 9016	=
Fin Pitch	RAL 9016 F	=
Electrical - Loads		
Dimensions		
Length	1200.0	=
Height	150.0	=
Identity Data		
URL	http://www.meinertz.com	=
Model	K76-139-12	=
Manufacturer	Meinertz	=
Keynote	K76-139-12	=
GoGetNo	6959	= 6959
Assembly Code		=
Type Comments		=
Description		=
Cost		=
Electrical		
Voltage		=
Wattage		=
Other		
Tube Radius	38.1	= Tube Diameter / 2
Tube Diameter	76.1	=
Offset	75.0	=
Fin Radius	69.5	= Fin Diameter / 2
Fin Offset	0.5	=
Fin Diameter	139.0	=

Buttons: OK, Cancel, Apply, Help

Family Types: New..., Rename..., Delete

Parameters: Add..., Modify..., Remove

Figure A.15
Type – K76-139-12
Sub Family Parameter Reference

8. Type – K101-164-12

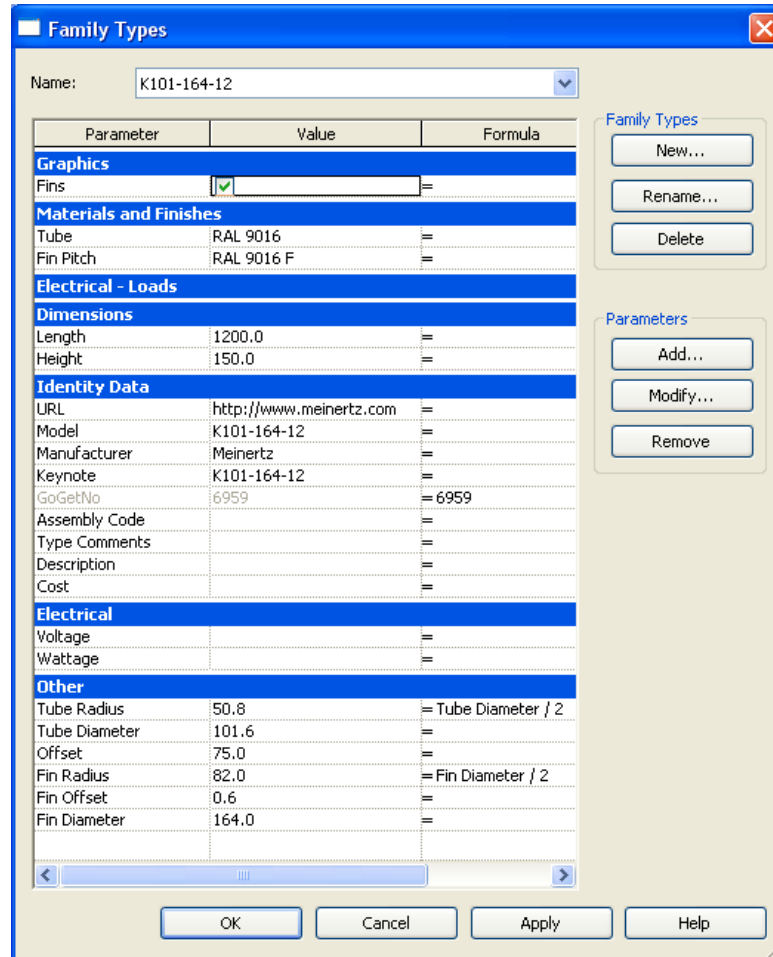


Figure A.16
 Type – K101-164-12
 Sub Family Parameter Reference