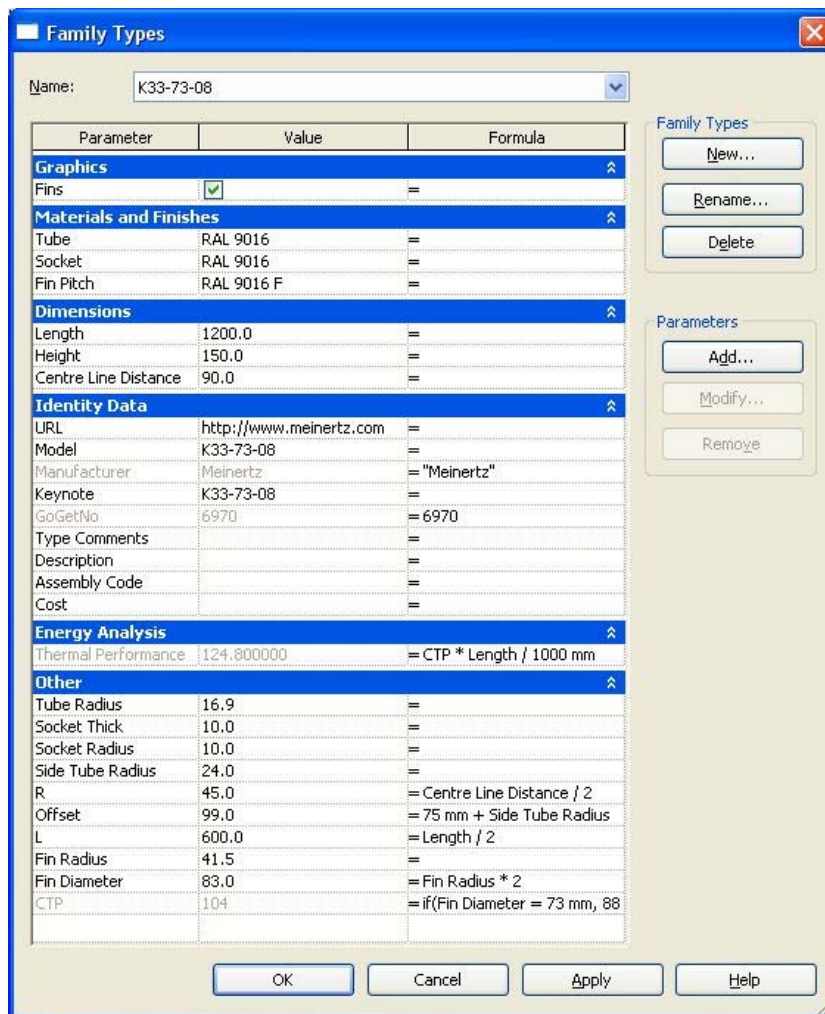


# Ribberør 2PE

## GoGetNo : 6970

### Family Types Preset

#### 1. Type - K33-73-08



**Figure A.01**  
Type - K33-73-08  
Family Parameter Reference

## 2. Type - K33-83-10

Family Types

Name: K33-83-10

Parameter	Value	Formula
<b>Graphics</b>		
Fins	<input checked="" type="checkbox"/>	=
<b>Materials and Finishes</b>		
Tube	RAL 9016	=
Socket	RAL 9016	=
Fin Pitch	RAL 9016 F	=
<b>Dimensions</b>		
Length	1200.0	=
Height	150.0	=
Centre Line Distance	100.0	=
<b>Identity Data</b>		
URL	http://www.meinertz.com	=
Model	K33-83-10	=
Manufacturer	Meinertz	= "Meinertz"
Keynote	K33-83-10	=
GoGetNo	6970	= 6970
Type Comments		=
Description		=
Assembly Code		=
Cost		=
<b>Energy Analysis</b>		
Thermal Performance	124.800000	= CTP * Length / 1000 mm
<b>Other</b>		
Tube Radius	16.9	=
Socket Thick	10.0	=
Socket Radius	10.0	=
Side Tube Radius	24.0	=
R	50.0	= Centre Line Distance / 2
Offset	99.0	= 75 mm + Side Tube Radius
L	600.0	= Length / 2
Fin Radius	41.5	=
Fin Diameter	83.0	= Fin Radius * 2
CTP	104	= if(Fin Diameter = 73 mm, 88

Family Types

New...  
Rename...  
Delete

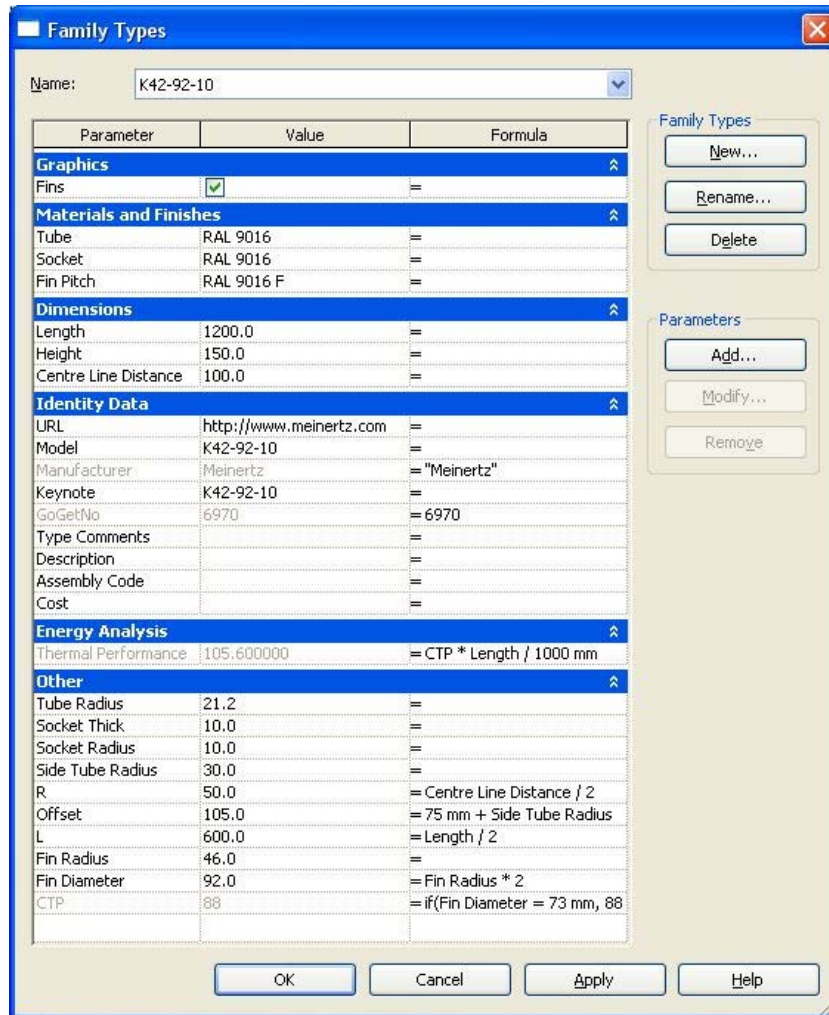
Parameters

Add...  
Modify...  
Remove

OK Cancel Apply Help

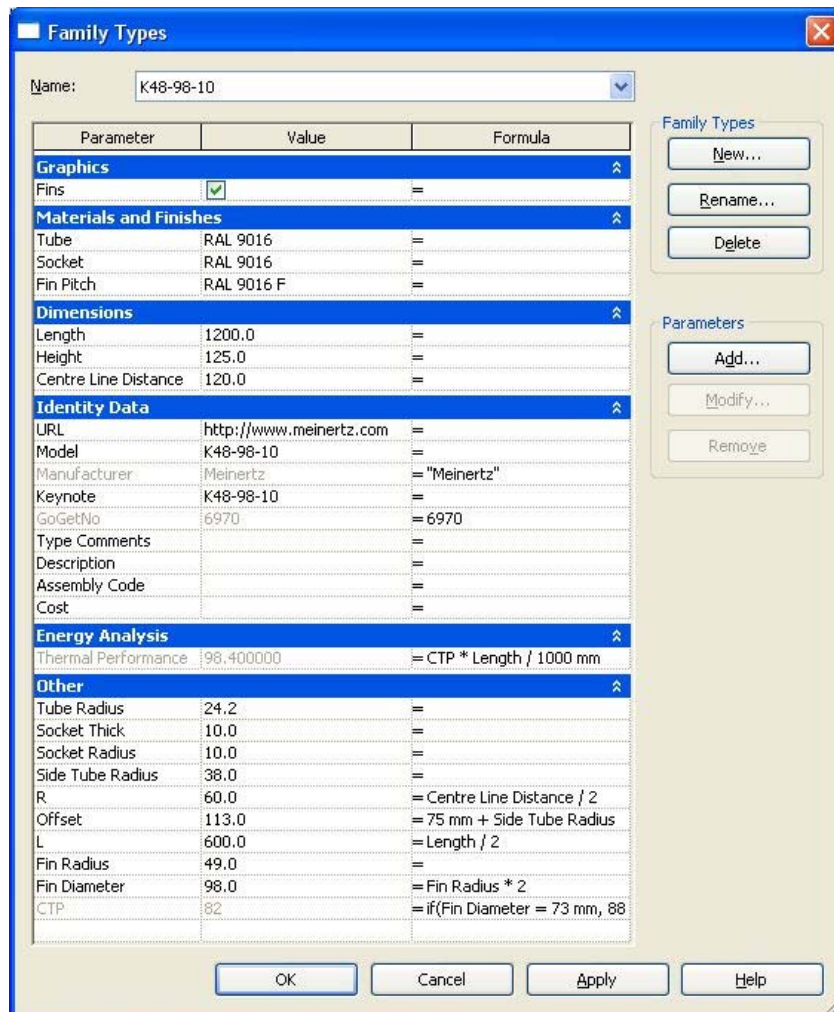
**Figure A.02**  
Type - K33-83-08  
Family Parameter Reference

### 3. Type - K42-92-10



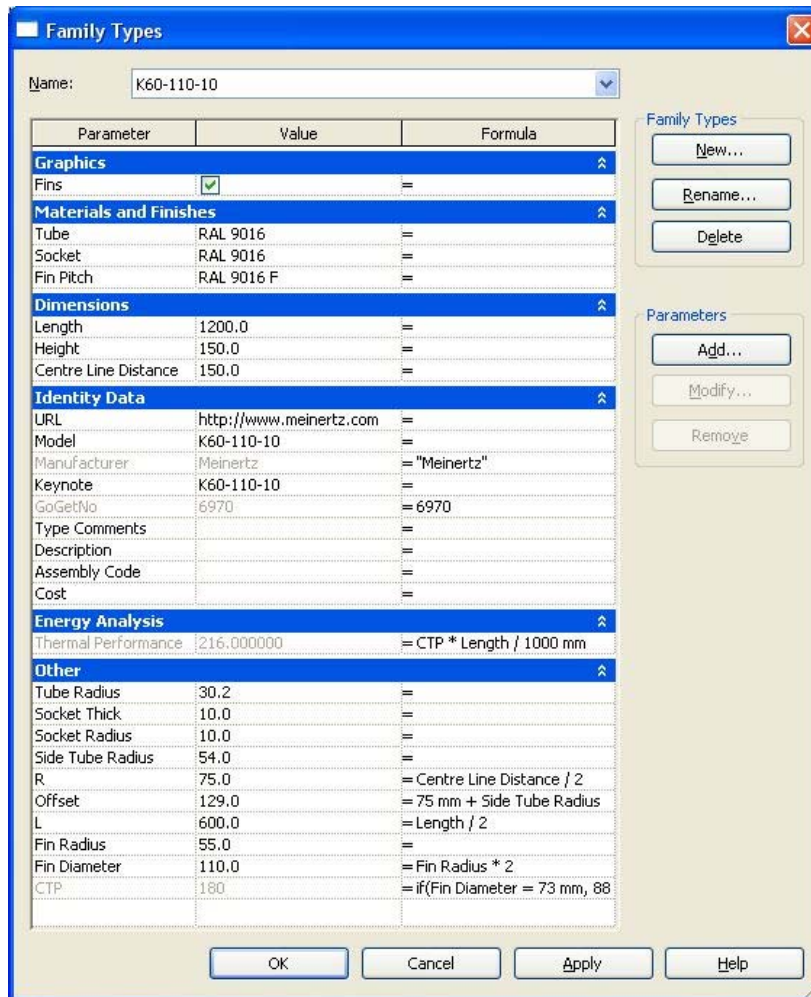
**Figure A.03**  
Type – K42-92-10  
Family Parameter Reference

#### 4. Type - K48-98-10



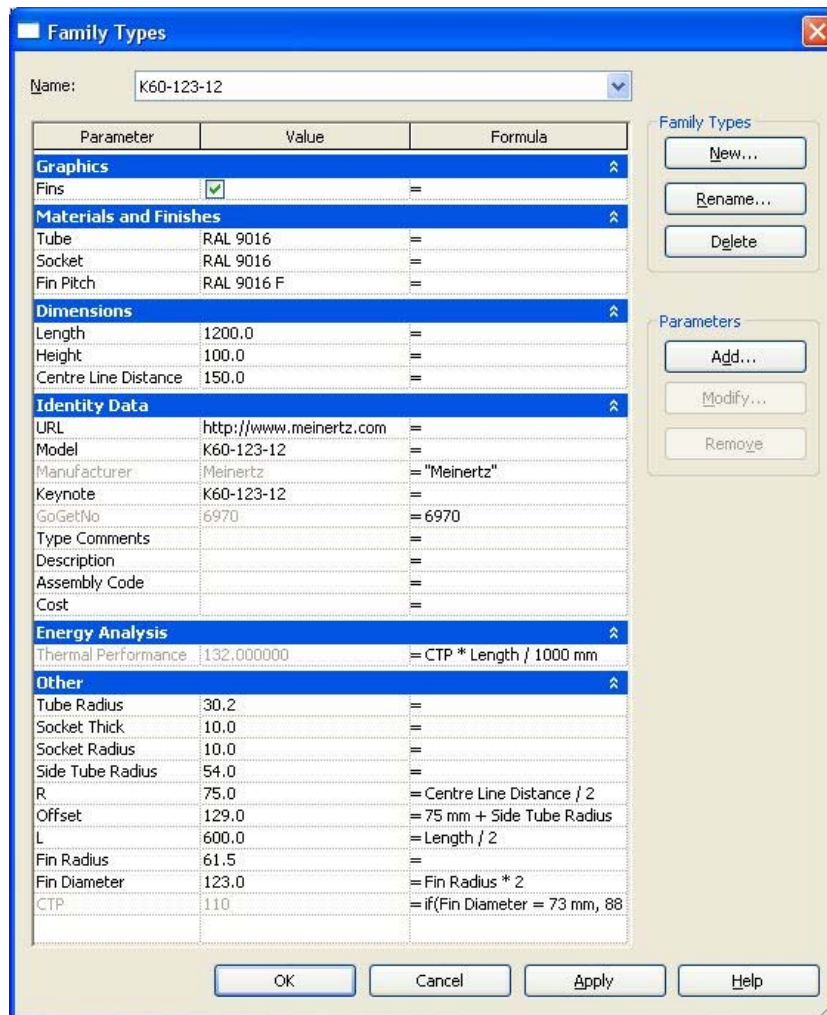
**Figure A.04**  
Type - K48-98-10  
Family Parameter Reference

5. Type - K60-110-10



**Figure A.05**  
Type – K60-101-10  
Family Parameter Reference

6. Type - K60-123-12



**Figure A.06**  
Type - K60-123-10  
Family Parameter Reference

## 7. Type - K76-139-12

Name: K76-139-12

Parameter	Value	Formula
<b>Graphics</b>		
Fins	<input checked="" type="checkbox"/>	=
<b>Materials and Finishes</b>		
Tube	RAL 9016	=
Socket	RAL 9016	=
Fin Pitch	RAL 9016 F	=
<b>Dimensions</b>		
Length	1200.0	=
Height	150.0	=
Centre Line Distance	190.0	=
<b>Identity Data</b>		
URL	http://www.meinertz.com	=
Model	K76-139-12	=
Manufacturer	Meinertz	= "Meinertz"
Keynote	K76-139-12	=
GoGetNo	6970	= 6970
Type Comments		=
Description		=
Assembly Code		=
Cost		=
<b>Energy Analysis</b>		
Thermal Performance	159.600000	= CTP * Length / 1000 mm
<b>Other</b>		
Tube Radius	38.5	=
Socket Thick	10.0	=
Socket Radius	10.0	=
Side Tube Radius	57.0	=
R	95.0	= Centre Line Distance / 2
Offset	132.0	= 75 mm + Side Tube Radius
L	600.0	= Length / 2
Fin Radius	69.5	=
Fin Diameter	139.0	= Fin Radius * 2
CTP	133	= if(Fin Diameter = 73 mm, 88

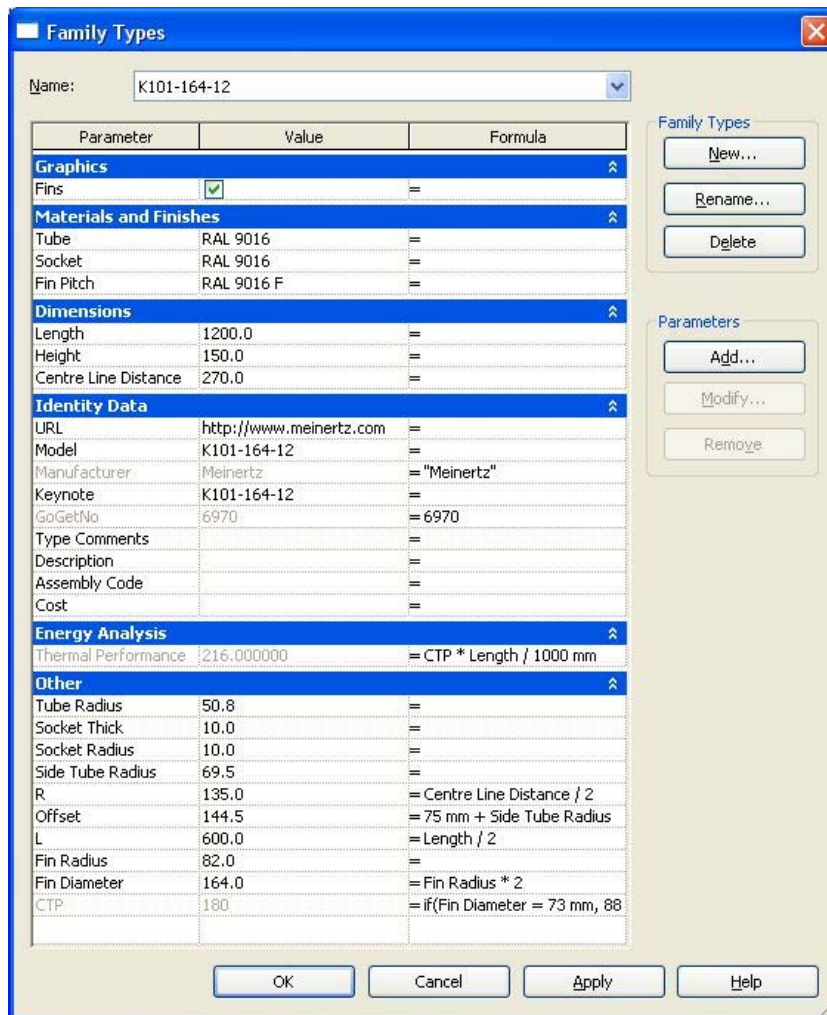
Family Types: New..., Rename..., Delete

Parameters: Add..., Modify..., Remove

OK Cancel Apply Help

**Figure A.07**  
Type – K76-139-12  
Family Parameter Reference

8. Type – K101-164-12

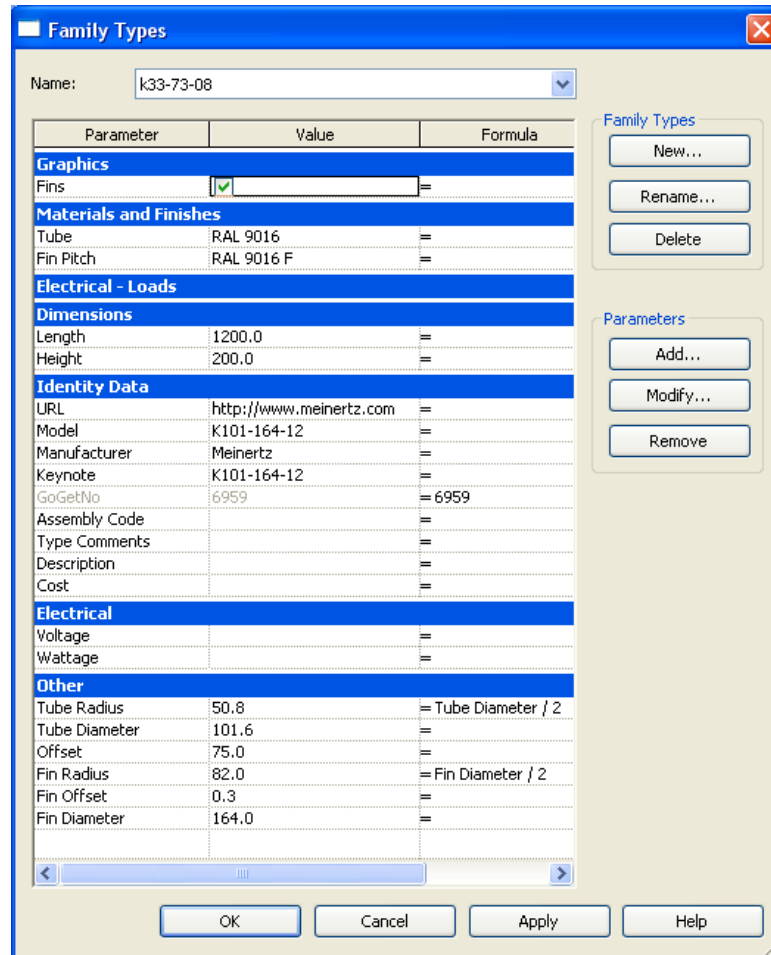


**Figure A.08**  
Type – K101-164-12  
Family Parameter Reference



# Sub Family Types Preset

## 1. Type - K33-73-08

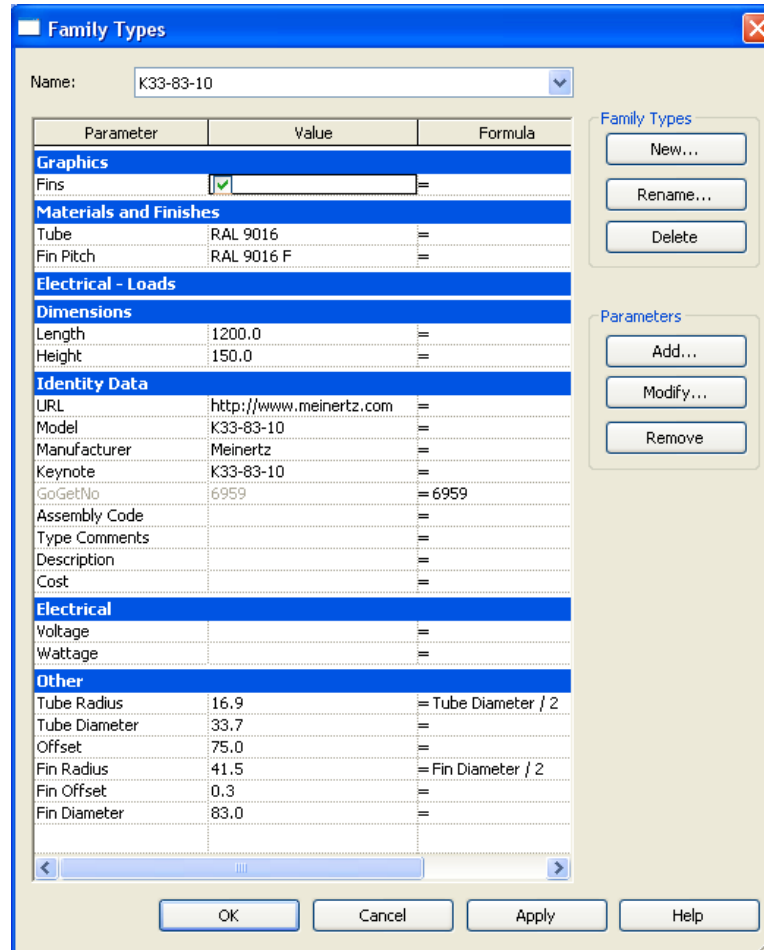


**Figure A.09**

Type - K33-73-08

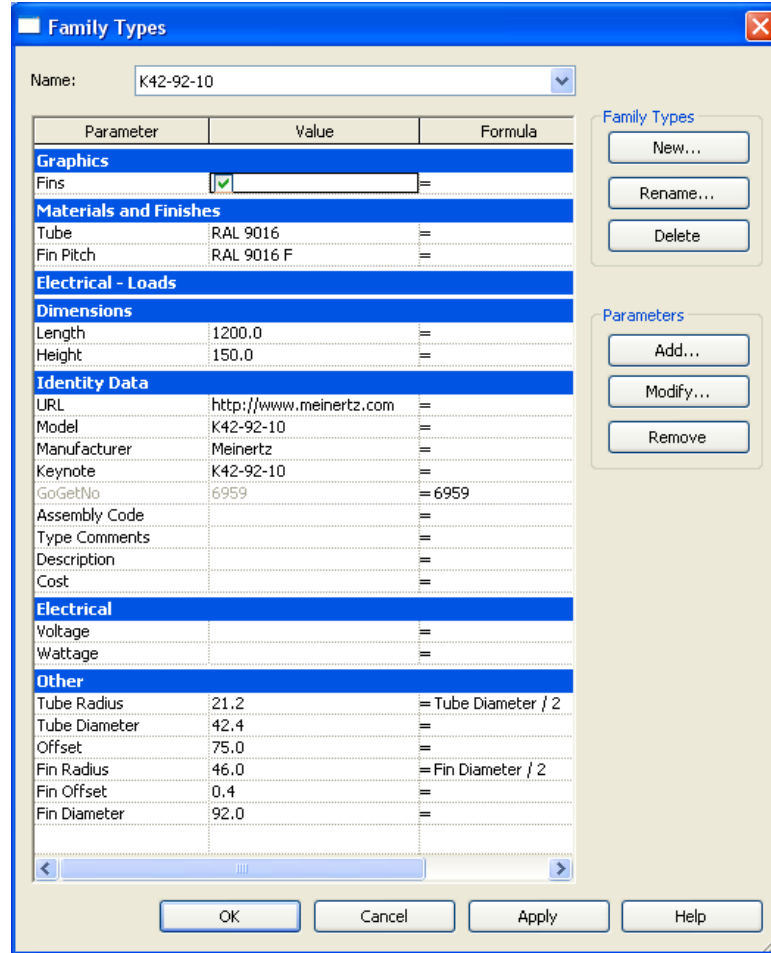
Sub Family Parameter Reference

## 2. Type - K33-83-10



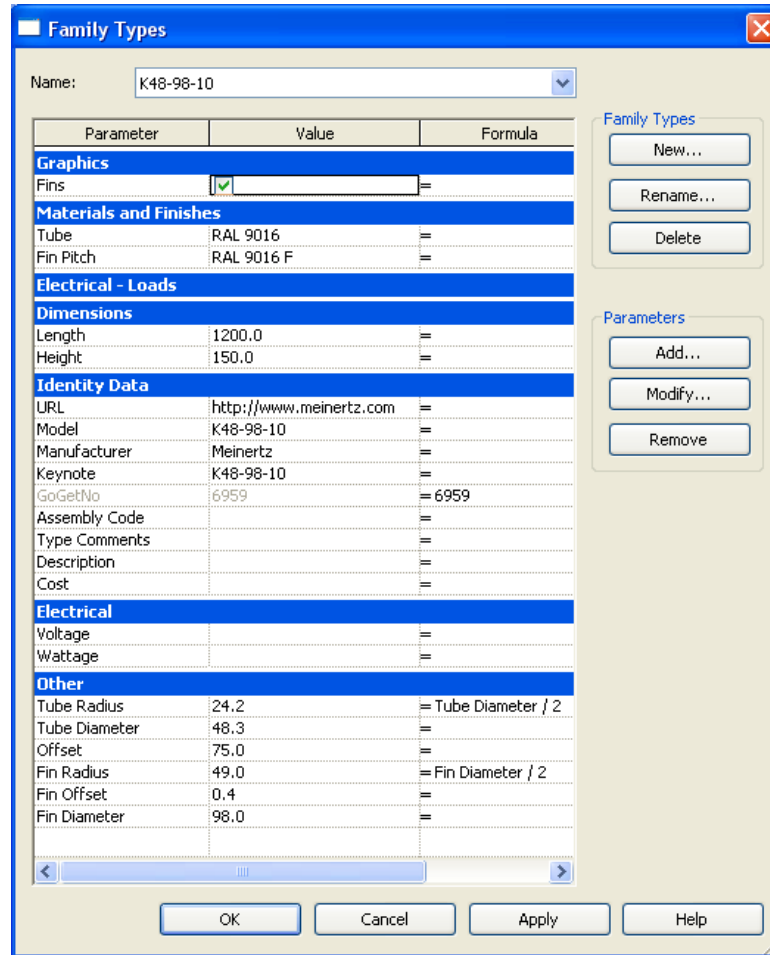
**Figure A.10**  
 Type - K33-83-08  
 Sub Family Parameter Reference

### 3. Type - K42-92-10



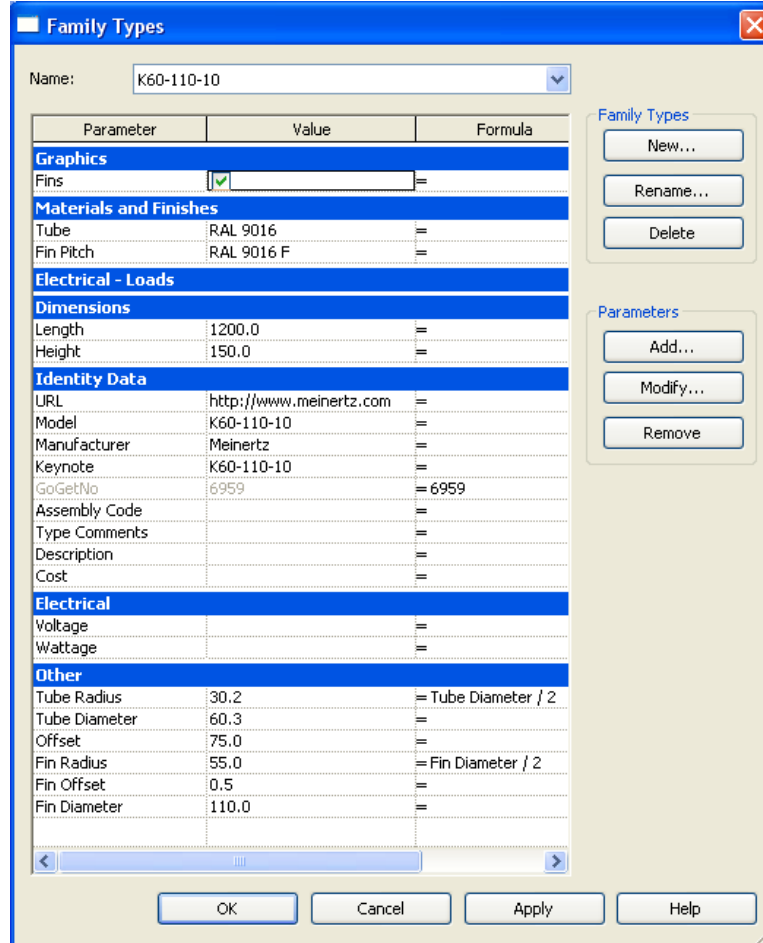
**Figure A.11**  
Type – K42-92-10  
Sub Family Parameter Reference

#### 4. Type - K48-98-10



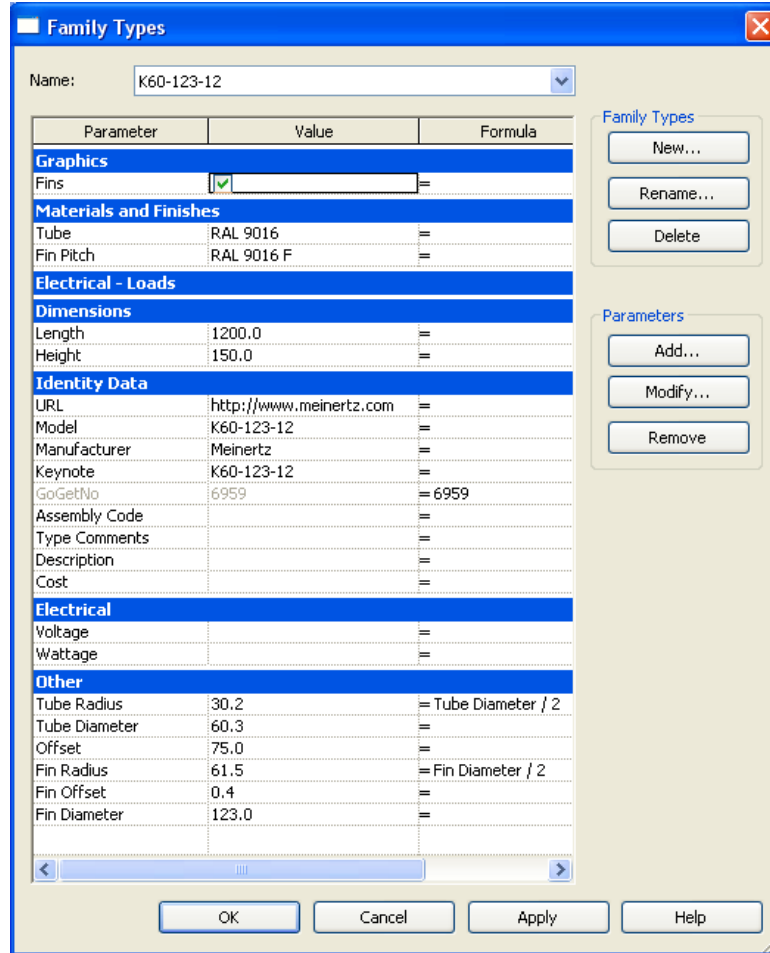
**Figure A.12**  
Type - K48-98-10  
Sub Family Parameter Reference

5. Type - K60-110-10



**Figure A.13**  
Type – K60-101-10  
Sub Family Parameter Reference

6. Type - K60-123-12



**Figure A.14**  
Type - K60-123-10  
Sub Family Parameter Reference

## 7. Type - K76-139-12

Name: K76-139-12

Parameter	Value	Formula
<b>Graphics</b>		
Fins	<input checked="" type="checkbox"/>	=
<b>Materials and Finishes</b>		
Tube	RAL 9016	=
Fin Pitch	RAL 9016 F	=
<b>Electrical - Loads</b>		
<b>Dimensions</b>		
Length	1200.0	=
Height	150.0	=
<b>Identity Data</b>		
URL	http://www.meinertz.com	=
Model	K76-139-12	=
Manufacturer	Meinertz	=
Keynote	K76-139-12	=
GoGetNo	6959	= 6959
Assembly Code		=
Type Comments		=
Description		=
Cost		=
<b>Electrical</b>		
Voltage		=
Wattage		=
<b>Other</b>		
Tube Radius	38.1	= Tube Diameter / 2
Tube Diameter	76.1	=
Offset	75.0	=
Fin Radius	69.5	= Fin Diameter / 2
Fin Offset	0.5	=
Fin Diameter	139.0	=

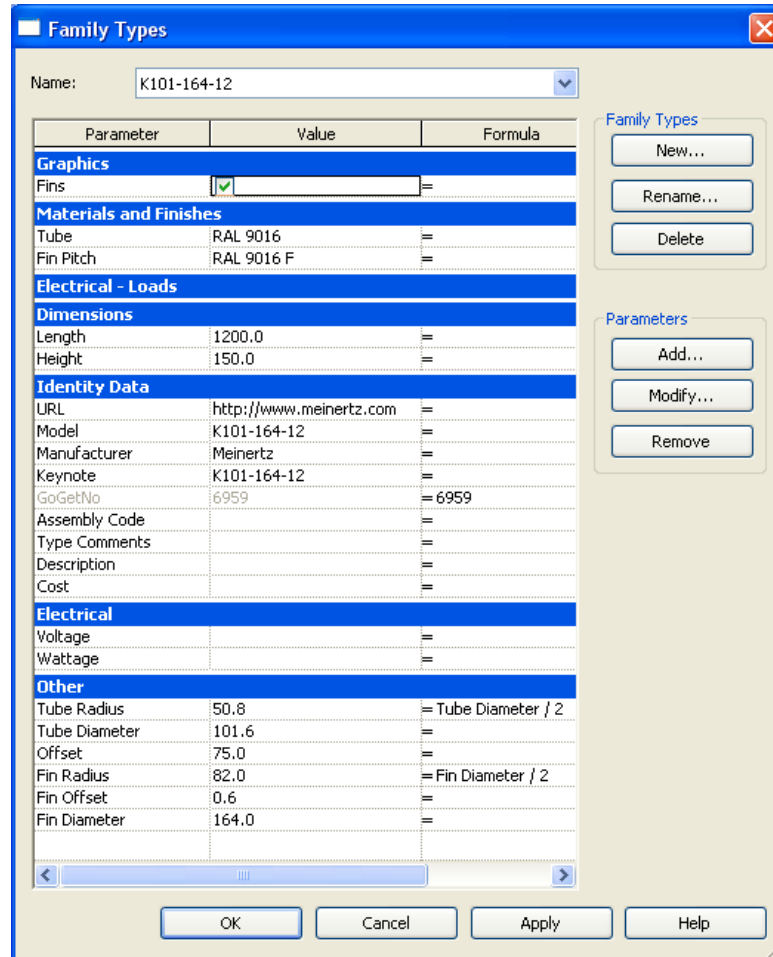
Family Types: New..., Rename..., Delete

Parameters: Add..., Modify..., Remove

OK Cancel Apply Help

**Figure A.15**  
Type – K76-139-12  
Sub Family Parameter Reference

8. Type – K101-164-12



**Figure A.16**  
 Type – K101-164-12  
 Sub Family Parameter Reference