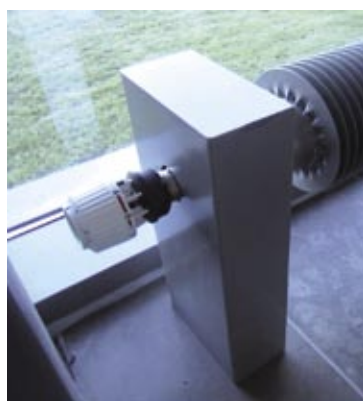
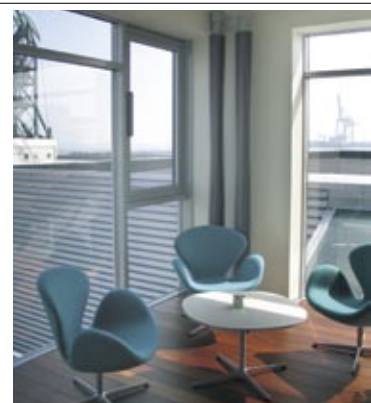


MEINERTZ FINNED TUBES

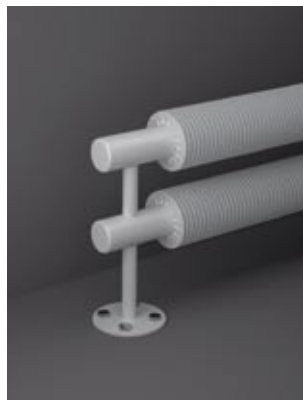
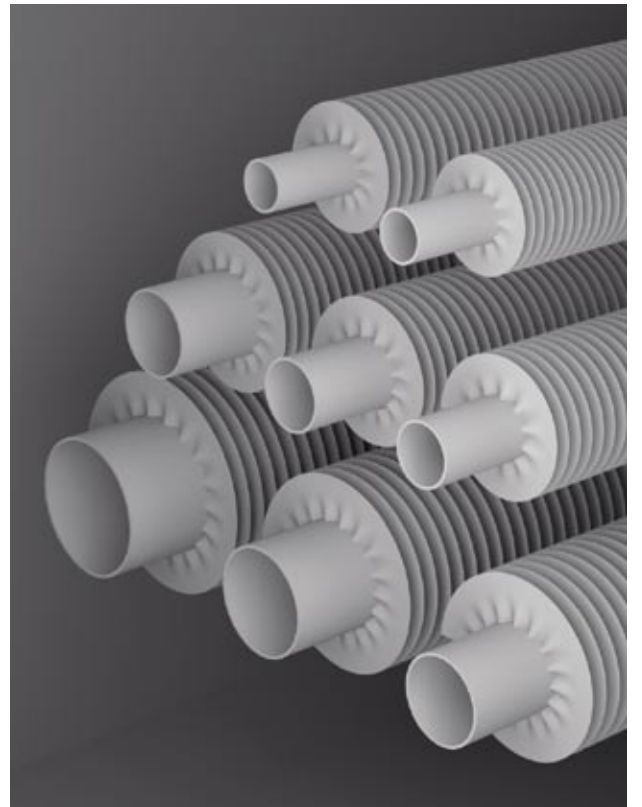
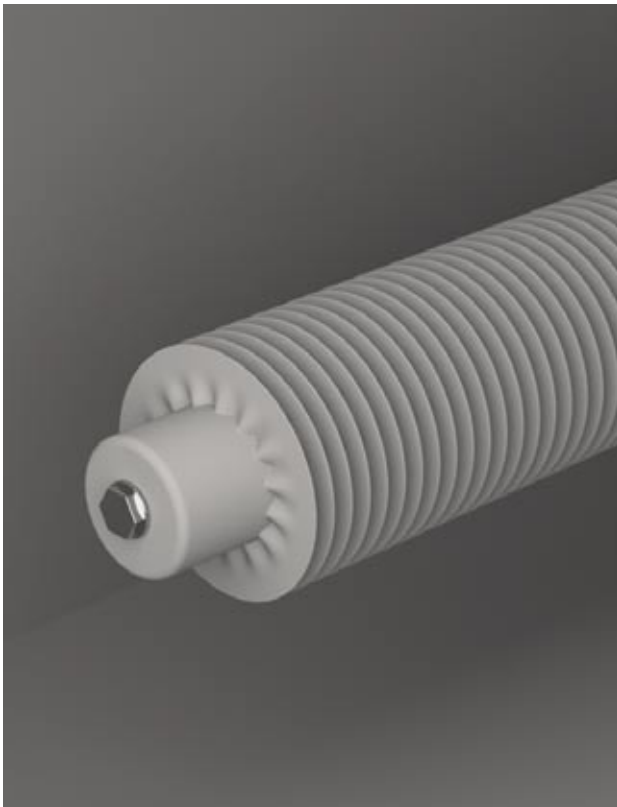


**MEINERTZ**





**Finned tubes** A design feature and an efficient heat source for large rooms, or to guard against cold draughts beside large window panels. With an expression that can be raw and rustic or beautifully integrated into the architecture through the choice of colours and installation, finned tubes are ideal for all kinds of renovation projects and in new property – from industrial and agricultural complexes to offices and public buildings. Finned tubes can be used individually or in groups, and can be mounted in a wide variety of different ways on walls, floors or ceilings. The heat output is optimised via carefully calculated relations between the individual elements.

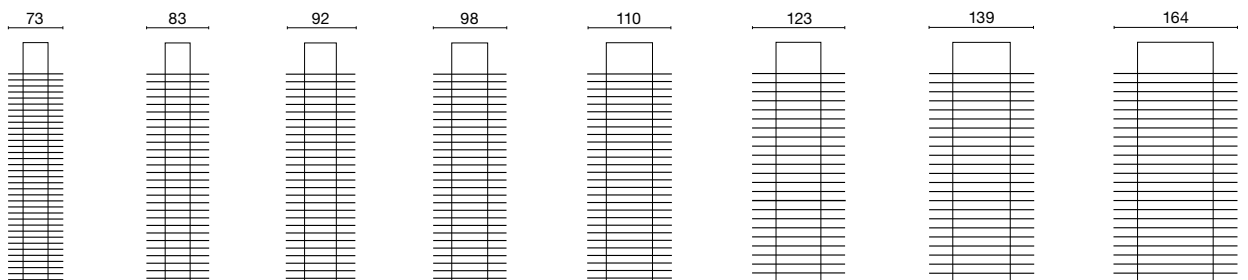


Raw and rustic, or  
chic and colourful  
– it's up to you

**FINNED TUBES**

Length max. 6000 mm

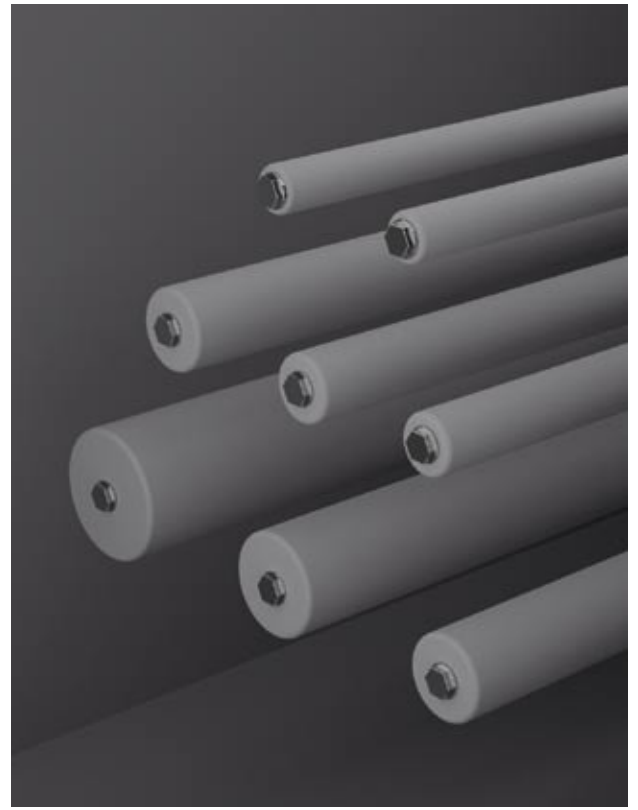
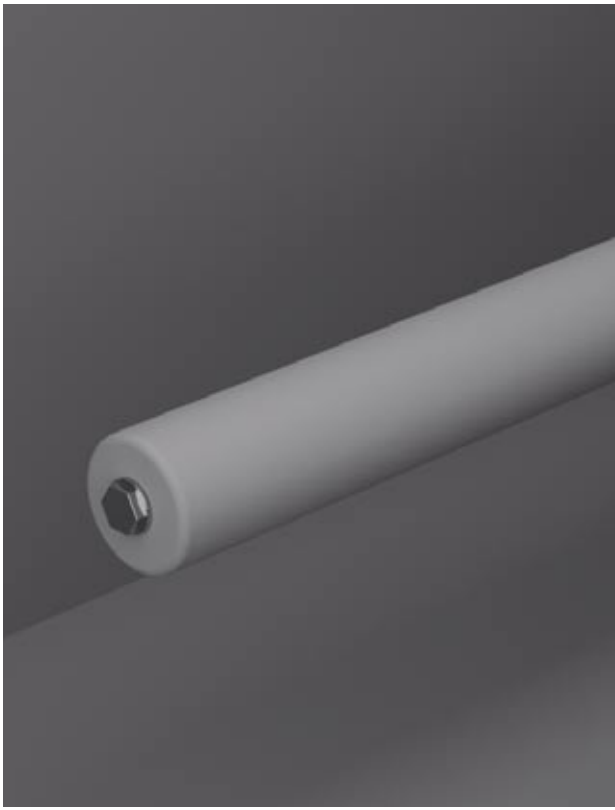
**Diameter**







**Plain tubes** A solution which can be distinctive or minimalist. The round forms can harmonise with arches and columns, provide a contrast to rectangular architecture, or mark the transition from floor to glass. Tubes in diameters from 33.7 mm to 101.6 mm and in lengths of up to 6000 mm can be integrated with various kinds of brackets to allow one or more tubes to be mounted on the wall, floor or ceiling. The tubes and brackets are supplied powder-lacquered in any RAL or NCS colours.



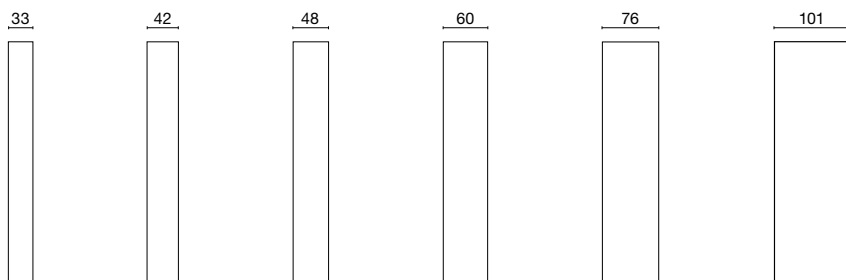
For architecture  
with clean  
lines

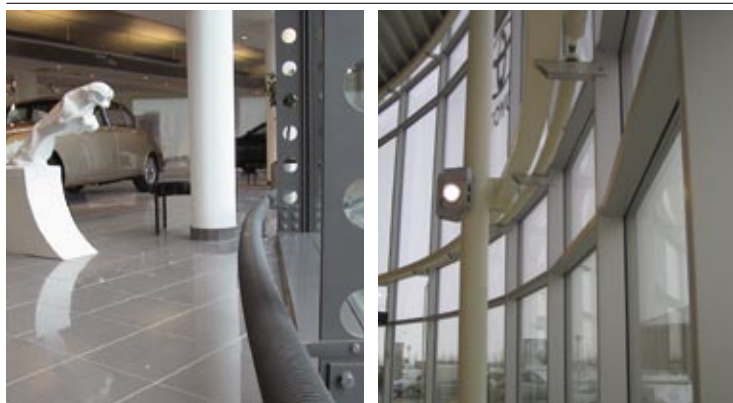
Simple,  
elegant and  
efficient

**PLAIN TUBES**

Length max. 6000 mm

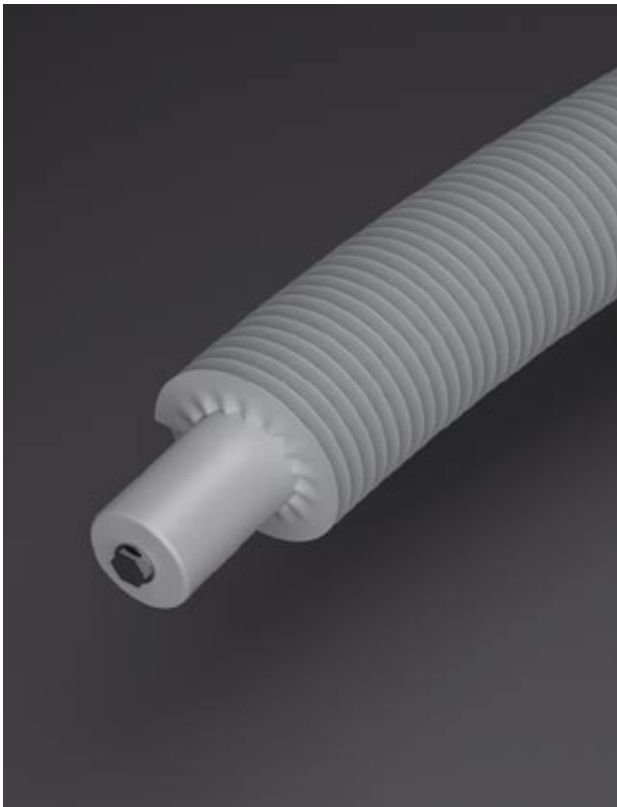
**Diameter**





**Curved tubes** When the architecture involves curving facades or vaulted ceilings, the space heating can harmonise with the concept. Both finned and plain tubes are available in curving versions in individual dimensions. You can choose between many different kinds of standard brackets for wall, floor or ceiling mounting, and we have plenty of experience in producing custom solutions to match individual window assemblies.





---

**MEINERTZ**  
When architects  
think outside  
the box

---

When the  
architecture departs  
from the straight  
and narrow

---

When traditions  
are there to be  
challenged or  
conserved

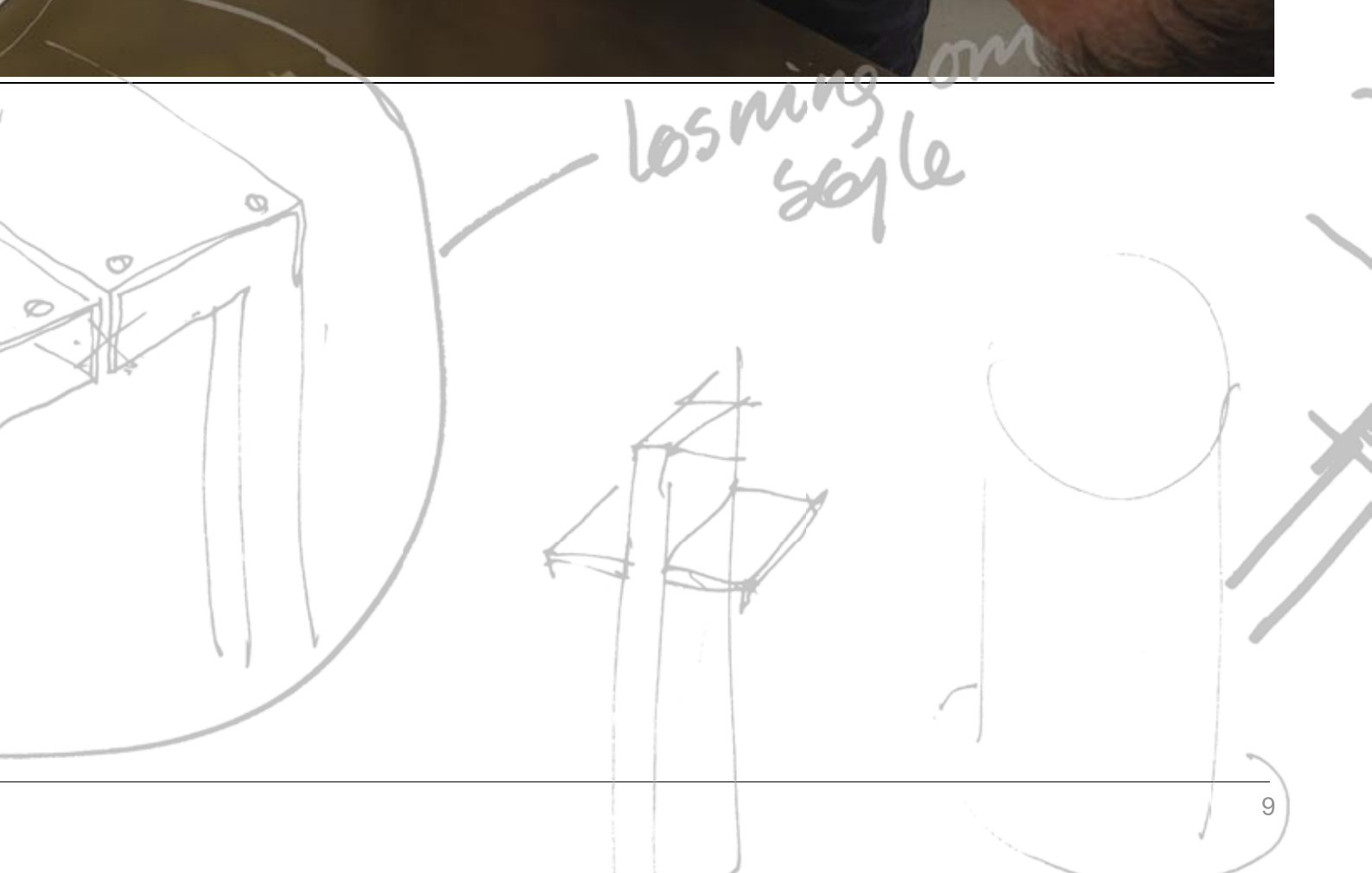
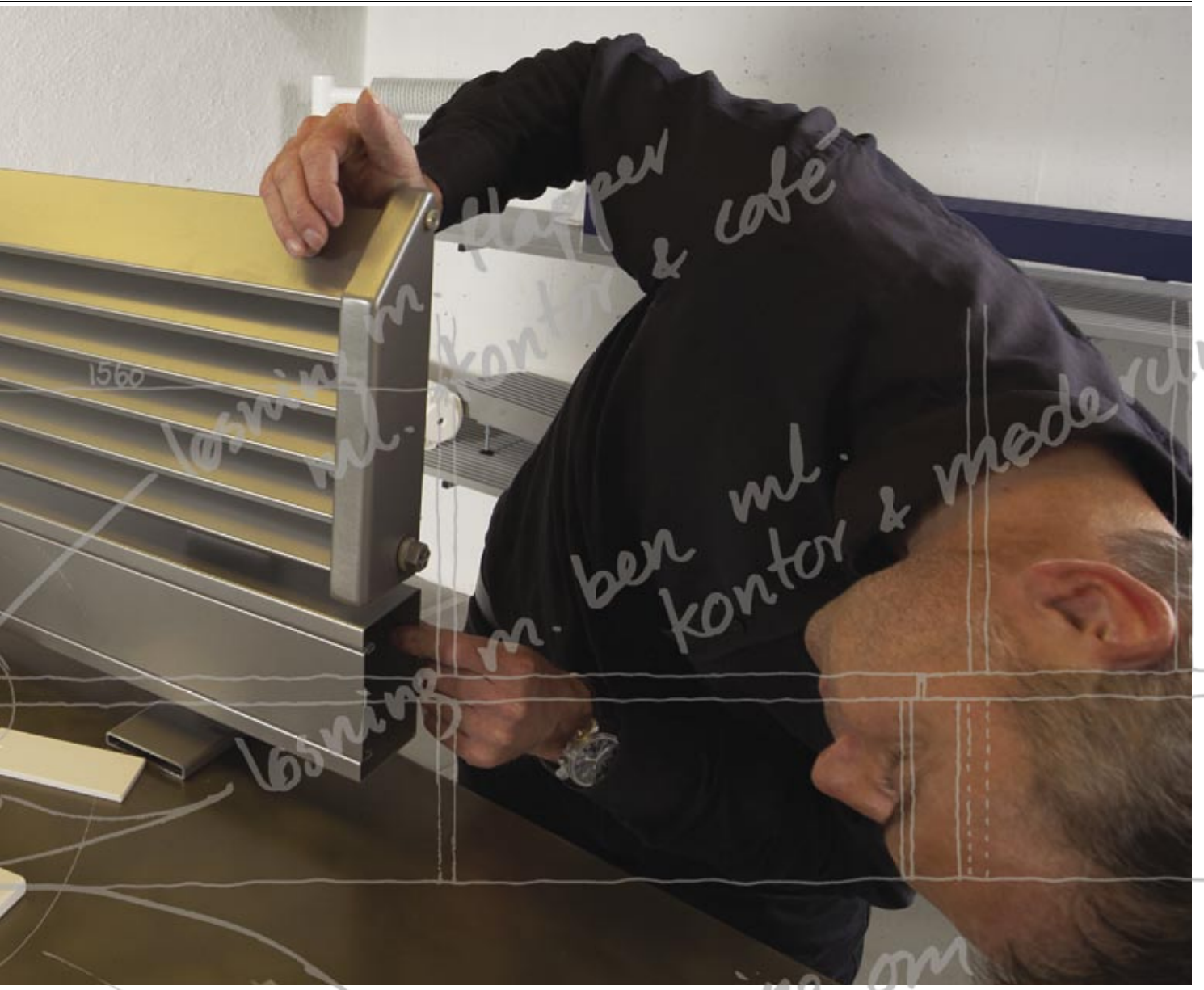
---



**MEINERTZ RadLab** is an exploratorium for architects, designers and others who work to create buildings in which all of the details form a harmonious architectural whole. MEINERTZ RadLab has everything you need to create or try out ideas for heaters as architectural elements, in the company of experienced heating design professionals. MEINERTZ RadLab is a combination of playground and workshop, where creativity, functionality and fine craftsmanship go hand in hand.

Design your own radiator, next time you are working on a project that deserves more than just a standard solution. Try a workshop at MEINERTZ RadLab.





# Technical data

## Finned tubes

---

### Lengths:

MEINERTZ finned tubes are supplied in the precise lengths desired, up to 6 metres.

---

### Colours:

As standard, all MEINERTZ products are supplied powder-lacquered in the colour RAL 9016 (traffic white), but other RAL and NSC colours are available on demand. Finned tubes can also be supplied hot galvanised, or in special materials for thermal tasks.

---

### Mounting:

MEINERTZ finned tubes can be mounted on walls or floors with the help of standard brackets. If you have any special fitting requirements, we will be happy to design and manufacture special brackets. All brackets are supplied in the same colour as the finned tubes.

---

### Delivery:

All MEINERTZ products are custom-made for the individual projects, but our efficient production system ensures short delivery times.

---

### Environment:

MEINERTZ is a CO<sub>2</sub>-neutral company that exclusively utilises energy from alternative energy sources. All of our products are made of materials that are 100% recyclable. All our transport packaging is made from wood. All excess powder used in the powder-lacquering process is recycled in our high-efficiency paint cabin.

---

### Further information:

Technical data sheets and information on type designations, performance, sockets, etc. may be downloaded from [www.meinertz.com](http://www.meinertz.com) or obtained from our consultants.

You can find lots of ideas for creative uses of MEINERTZ products at our website and in inspiration catalogue.







**MEINERTZ A/S**

Sverigesvej 11  
DK-8660 Skanderborg  
Denmark  
Tel. +45 8652 1811  
Fax +45 8652 1515  
E-mail [meinertz@meinertz.com](mailto:meinertz@meinertz.com)  
[www.meinertz.com](http://www.meinertz.com)

www.moesgaard-as.dk | DK-12-2009

**MEINERTZ**

